

RENOVATIONS/ALTERATIONS

TO

THE JOHN HANCOCK LODGE

275 BROADWAY

METHUEN, MA 01844

SUBMITTAL SET: 8-4-21



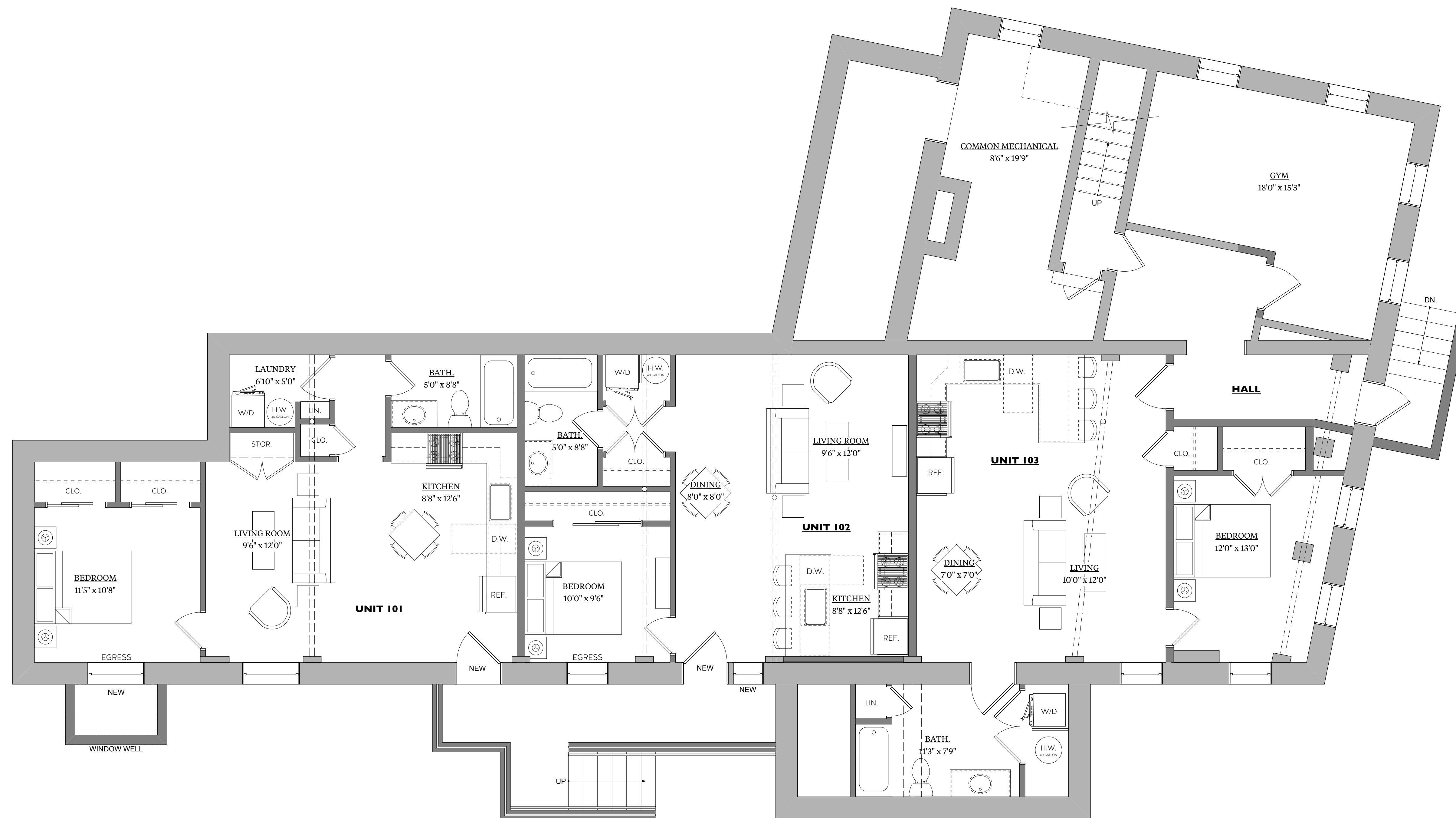
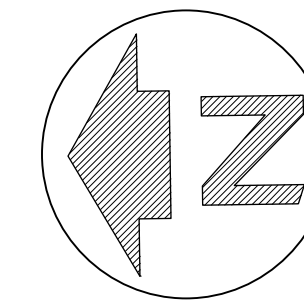
FLOOR AREA TABLE					
	BASEMENT	1ST FLOOR	2ND FLOOR	3RD FLOOR	TOTAL*
NONRESIDENTIAL	± 550 SQ. FT.	-	-	-	± 550 SQ. FT.
RESIDENTIAL	± 2192 SQ. FT.	± 4191 SQ. FT.	± 3205 SQ. FT.	± 1355 SQ. FT.	± 10943 SQ. FT.
COMMON AREAS	± 224 SQ. FT.	± 668 SQ. FT.	± 319 SQ. FT.	± 185 SQ. FT.	± 1396 SQ. FT.

* FLOOR AREAS ARE APPROXIMATE NONRESIDENTIAL SPACE DOES NOT INCLUDE COMMON AREAS

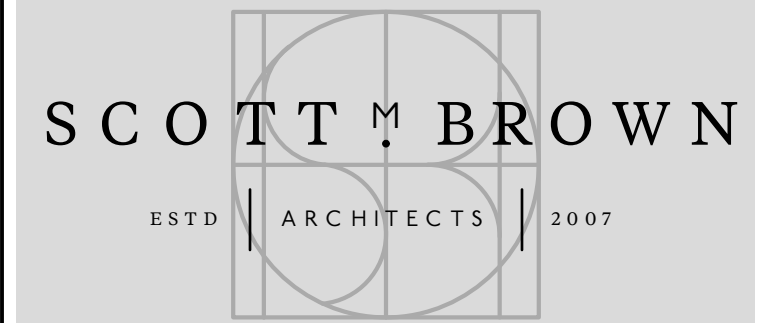
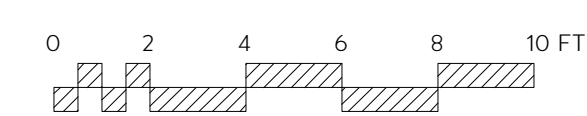
SQUARE FOOTAGE				
FLOOR	UNIT NUMBER	BEDROOM COUNT	BATHROOM COUNT	SQ. FOOTAGE
BASEMENT	101	1 BR	1 BATH	677 SQ. FT.
	102	1 BR	1 BATH	611 SQ. FT.
	103	1 BR	1 BATH	732 SQ. FT.
FIRST FLOOR	201	1 BR	1 BATH	545 SQ. FT.
	202	1 BR	1 BATH	656 SQ. FT.
	203*	1 BR	1 BATH	650 SQ. FT.
	204	1 BR	1 BATH	681 SQ. FT.
	205*	2 BR	1 BATH	1,010 SQ. FT.
	206	1 BR	1 BATH	500 SQ. FT.
SECOND FLOOR	301	1 BR	1 BATH	776 SQ. FT.
	302*	1 BR	1 BATH	705 SQ. FT.
	303	2 BR	1.5 BATH	832 SQ. FT.
	304	1 BR	1 BATH	771 SQ. FT.
THIRD FLOOR	401*	1 BR	1 BATH	610 SQ. FT.
	402	1 BR	1 BATH	672 SQ. FT.

* INDICATES AFFORDABLE UNIT
ROOM DATA ARE COMPUTER GENERATED. CONTRACTOR IS RESPONSIBLE TO VERIFY INFORMATION PROVIDED IN CHART.

- NEW WALLS
- EXISTING WALLS



1 BASEMENT FLOOR PLAN
Scale: 1/4" = 1'-0"



48 MARKET STREET
NEWBURYPORT, MA 01950
T. 978.465.3535
WWW.SCOTTBROWNARCHITECT.COM

ADDITIONS/ALTERATIONS TO:
JOHN HANCOCK LODGE
275 BROADWAY, METHUEN, MA

REVISION & REISSUE NOTES

No.	Date	Notes

Project # 2020-69	Project Manager M.L.	Date 8/4/21
----------------------	-------------------------	----------------

Scale: AS NOTED

BASEMENT FLOOR PLAN

A1.0

COPYRIGHT 2021 SCOTT M. BROWN, ARCHITECTS

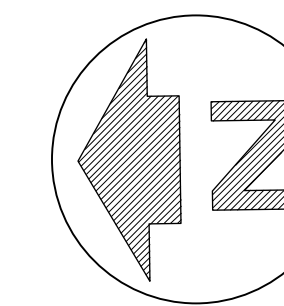
FLOOR AREA TABLE					
	BASEMENT	1ST FLOOR	2ND FLOOR	3RD FLOOR	TOTAL*
NONRESIDENTIAL	± 550 SQ. FT.	-	-	-	± 550 SQ. FT.
RESIDENTIAL	± 2192 SQ. FT.	± 4191 SQ. FT.	± 3205 SQ. FT.	± 1355 SQ. FT.	± 10943 SQ. FT.
COMMON AREAS	± 224 SQ. FT.	± 668 SQ. FT.	± 319 SQ. FT.	± 185 SQ. FT.	± 1396 SQ. FT.

* FLOOR AREAS ARE APPROXIMATE NONRESIDENTIAL SPACE DOES NOT INCLUDE COMMON AREAS

SQUARE FOOTAGE				
FLOOR	UNIT NUMBER	BEDROOM COUNT	BATHROOM COUNT	SQ. FOOTAGE
BASEMENT	101	1 BR	1 BATH	277 SQ. FT.
	102	1 BR	1 BATH	411 SQ. FT.
	103	1 BR	1 BATH	732 SQ. FT.
FIRST FLOOR	201	1 BR	1 BATH	545 SQ. FT.
	202	1 BR	1 BATH	656 SQ. FT.
	203*	1 BR	1 BATH	450 SQ. FT.
	204	1 BR	1 BATH	481 SQ. FT.
	205*	2 BR	1 BATH	1,010 SQ. FT.
	206	1 BR	1 BATH	500 SQ. FT.
SECOND FLOOR	301	1 BR	1 BATH	776 SQ. FT.
	302*	1 BR	1 BATH	705 SQ. FT.
	303	2 BR	1.5 BATH	832 SQ. FT.
	304	1 BR	1 BATH	771 SQ. FT.
THIRD FLOOR	401*	1 BR	1 BATH	610 SQ. FT.
	402	1 BR	1 BATH	672 SQ. FT.

* INDICATES AFFORDABLE UNIT
ROOM DATA ARE COMPUTER GENERATED. CONTRACTOR IS RESPONSIBLE TO VERIFY INFORMATION PROVIDED IN CHART.

NEW WALLS
EXISTING WALLS



1 FIRST FLOOR PLAN
Scale: 1/4" = 1'-0"

SCOTT BROWN
ESTD ARCHITECTS 2007

48 MARKET STREET
NEWBURYPORT, MA 01950
T. 978.465.3535
WWW.SCOTTBROWNARCHITECT.COM

ADDITIONS/ALTERATIONS TO:
JOHN HANCOCK LODGE
275 BROADWAY, METHUEN, MA

REVISION & REISSUE NOTES

No.	Date	Notes

Project # 2020-69	Project Manager M.L.	Date 8/4/21
----------------------	-------------------------	----------------

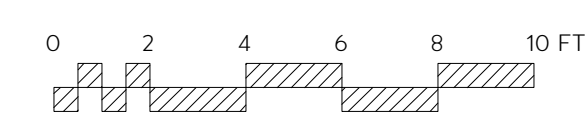
Scale: AS NOTED

FIRST FLOOR PLAN

A1.1

COPYRIGHT 2021 SCOTT M. BROWN, ARCHITECTS

CAD File Name:
275_Broadway_SD_6-29.vwx



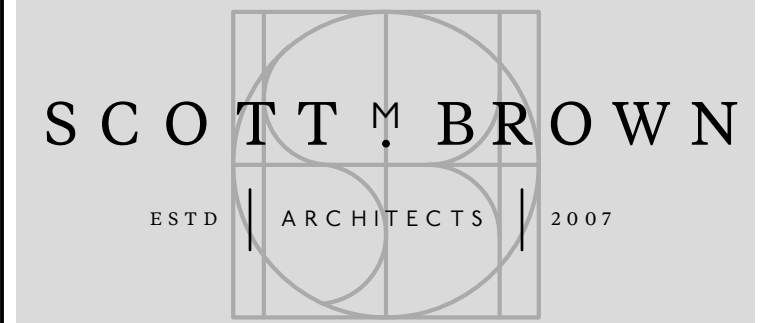
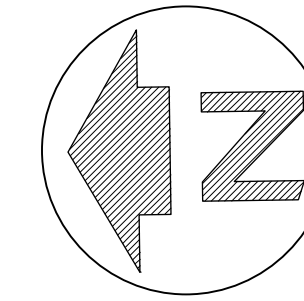
FLOOR AREA TABLE					
	BASEMENT	1ST FLOOR	2ND FLOOR	3RD FLOOR	TOTAL*
NONRESIDENTIAL	± 550 SQ. FT.	-	-	-	± 550 SQ. FT.
RESIDENTIAL	± 2192 SQ. FT.	± 4191 SQ. FT.	± 3205 SQ. FT.	± 1355 SQ. FT.	± 10943 SQ. FT.
COMMON AREAS	± 224 SQ. FT.	± 668 SQ. FT.	± 319 SQ. FT.	± 185 SQ. FT.	± 1396 SQ. FT.

* FLOOR AREAS ARE APPROXIMATE NONRESIDENTIAL SPACE DOES NOT INCLUDE COMMON AREAS

SQUARE FOOTAGE				
FLOOR	UNIT NUMBER	BEDROOM COUNT	BATHROOM COUNT	SQ. FOOTAGE
BASEMENT	101	1 BR	1 BATH	277 SQ. FT.
	102	1 BR	1 BATH	411 SQ. FT.
	103	1 BR	1 BATH	732 SQ. FT.
FIRST FLOOR	201	1 BR	1 BATH	545 SQ. FT.
	202	1 BR	1 BATH	656 SQ. FT.
	203*	1 BR	1 BATH	650 SQ. FT.
	204	1 BR	1 BATH	481 SQ. FT.
	205*	2 BR	1 BATH	1,010 SQ. FT.
	206	1 BR	1 BATH	500 SQ. FT.
SECOND FLOOR	301	1 BR	1 BATH	776 SQ. FT.
	302*	1 BR	1 BATH	705 SQ. FT.
	303	2 BR	1.5 BATH	832 SQ. FT.
	304	1 BR	1 BATH	771 SQ. FT.
THIRD FLOOR	401*	1 BR	1 BATH	610 SQ. FT.
	402	1 BR	1 BATH	672 SQ. FT.

* INDICATES AFFORDABLE UNIT
ROOM DATA ARE COMPUTER GENERATED. CONTRACTOR IS RESPONSIBLE TO VERIFY INFORMATION PROVIDED IN CHART.

NEW WALLS
EXISTING WALLS



48 MARKET STREET
NEWBURYPORT, MA 01950
T. 978.465.3535
WWW.SCOTTBROWNARCHITECT.COM

ADDITIONS/ALTERATIONS TO:
JOHN HANCOCK LODGE
275 BROADWAY, METHUEN, MA

REVISION & REISSUE NOTES

No.	Date	Notes

Project # 2020-69	Project Manager M.L.	Date 8/4/21
----------------------	-------------------------	----------------

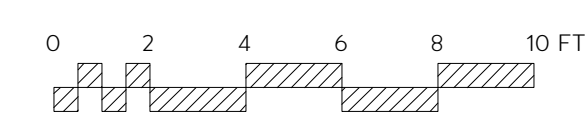
Scale: AS NOTED

SECOND FLOOR PLAN

A1.2

COPYRIGHT 2021 SCOTT M. BROWN, ARCHITECTS

1 SECOND FLOOR PLAN
Scale: 1/4" = 1'-0"



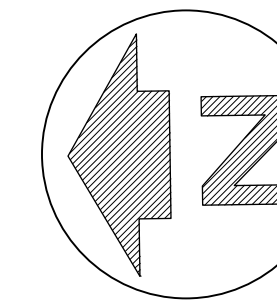
FLOOR AREA TABLE					
	BASEMENT	1ST FLOOR	2ND FLOOR	3RD FLOOR	TOTAL*
NONRESIDENTIAL	± 550 SQ. FT.	-	-	-	± 550 SQ. FT.
RESIDENTIAL	± 2192 SQ. FT.	± 4191 SQ. FT.	± 3205 SQ. FT.	± 1355 SQ. FT.	± 10943 SQ. FT.
COMMON AREAS	± 224 SQ. FT.	± 668 SQ. FT.	± 319 SQ. FT.	± 185 SQ. FT.	± 1396 SQ. FT.

* FLOOR AREAS ARE APPROXIMATE NONRESIDENTIAL SPACE DOES NOT INCLUDE COMMON AREAS

SQUARE FOOTAGE				
FLOOR	UNIT NUMBER	BEDROOM COUNT	BATHROOM COUNT	SQ. FOOTAGE
BASEMENT	101	1 BR	1 BATH	277 SQ. FT.
	102	1 BR	1 BATH	411 SQ. FT.
	103	1 BR	1 BATH	732 SQ. FT.
FIRST FLOOR	201	1 BR	1 BATH	545 SQ. FT.
	202	1 BR	1 BATH	656 SQ. FT.
	203*	1 BR	1 BATH	650 SQ. FT.
	204	1 BR	1 BATH	481 SQ. FT.
	205*	2 BR	1 BATH	1,010 SQ. FT.
SECOND FLOOR	301	1 BR	1 BATH	776 SQ. FT.
	302*	1 BR	1 BATH	705 SQ. FT.
	303	2 BR	1.5 BATH	832 SQ. FT.
	304	1 BR	1 BATH	771 SQ. FT.
THIRD FLOOR	401*	1 BR	1 BATH	610 SQ. FT.
	402	1 BR	1 BATH	672 SQ. FT.

* INDICATES AFFORDABLE UNIT
ROOM DATA ARE COMPUTER GENERATED. CONTRACTOR IS RESPONSIBLE TO VERIFY INFORMATION PROVIDED IN CHART.

- NEW WALLS
- EXISTING WALLS



SCOTT M. BROWN
ESTD ARCHITECTS 2007

48 MARKET STREET
NEWBURYPORT, MA 01950
T. 978.465.3535
WWW.SCOTTBROWNARCHITECT.COM

ADDITIONS/ALTERATIONS TO:
JOHN HANCOCK LODGE
 275 BROADWAY, METHUEN, MA

REVISION & REISSUE NOTES

No.	Date	Notes

Project # 2020-69	Project Manager M.L.	Date 8/4/21
----------------------	-------------------------	----------------

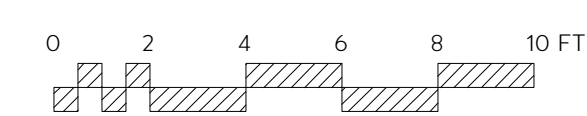
Scale: AS NOTED

THIRD FLOOR PLAN

A1.3

COPYRIGHT 2021 SCOTT M. BROWN, ARCHITECTS

1 THIRD FLOOR PLAN
Scale: 1/4" = 1'-0"



ADDITIONS/ALTERATIONS TO:
JOHN HANCOCK LODGE
275 BROADWAY, METHUEN, MA



REVISION & REISSUE NOTES

No.	Date	Notes

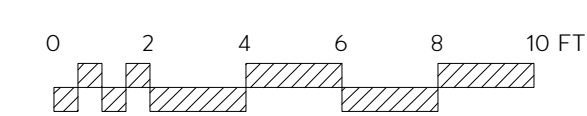
Project # 2020-69	Project Manager M.L.	Date 8/4/21
----------------------	-------------------------	----------------

Scale: AS NOTED

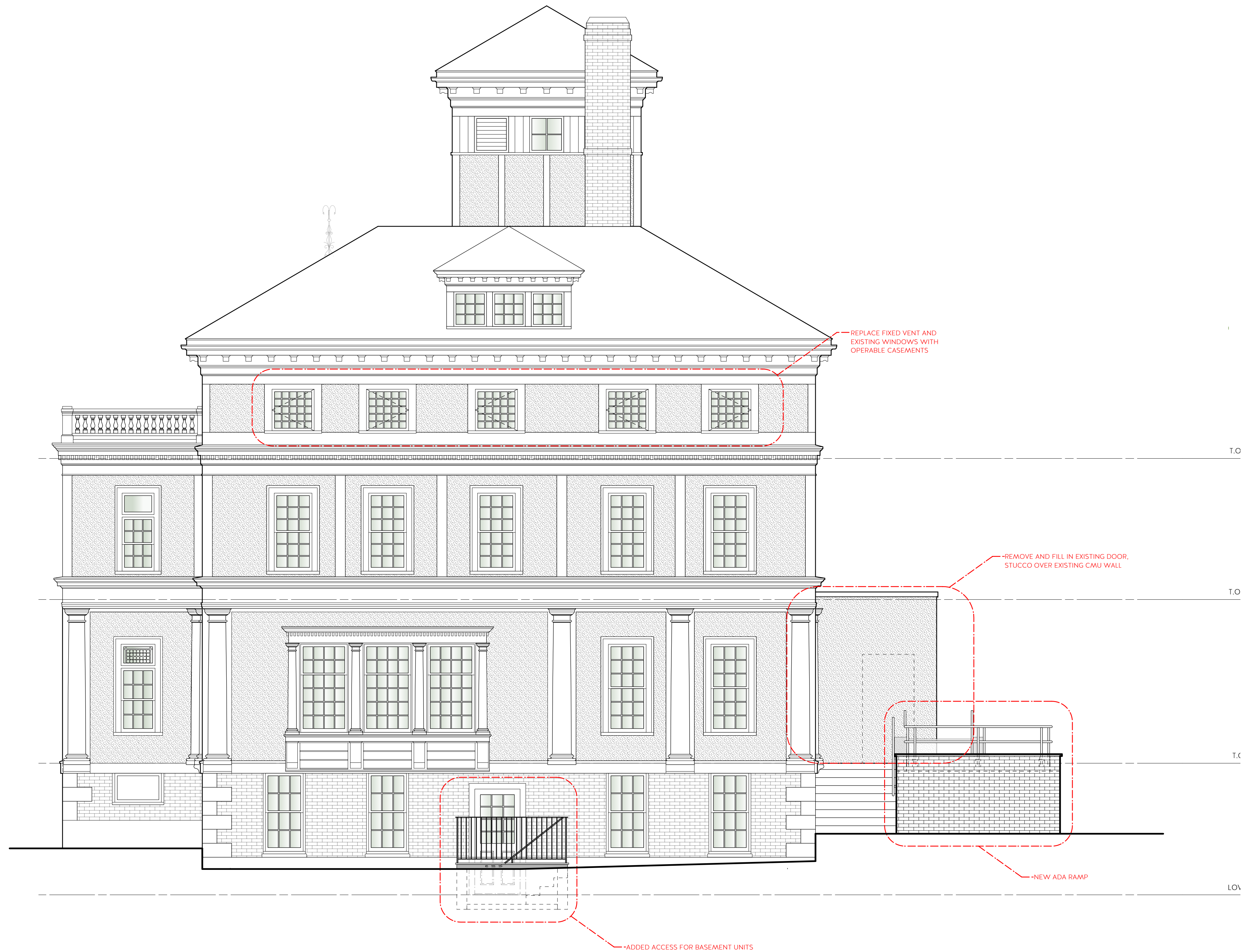
FRONT ELEVATION

A2.0

1 BROADWAY ELEVATION
Scale: 1/4" = 1'-0"



ADDITIONS/ALTERATIONS TO:
JOHN HANCOCK LODGE
275 BROADWAY, METHUEN, MA



REVISION & REISSUE NOTES

No.	Date	Notes

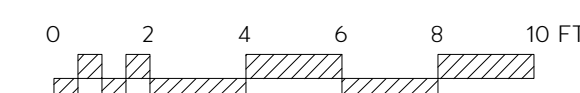
Project # 2020-69	Project Manager M.L.	Date 8/4/21
----------------------	-------------------------	----------------

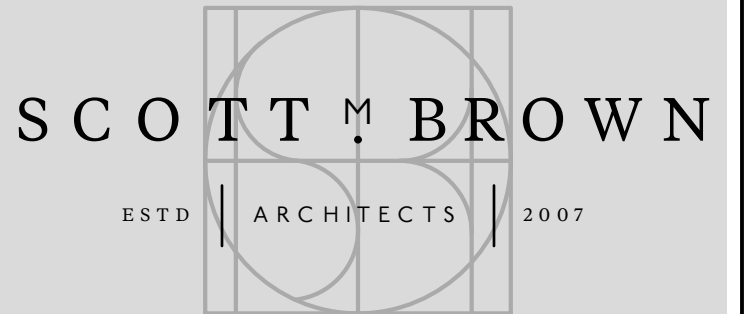
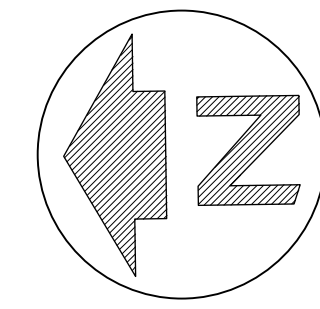
Scale: AS NOTED

RIGHT ELEVATION

A2.1

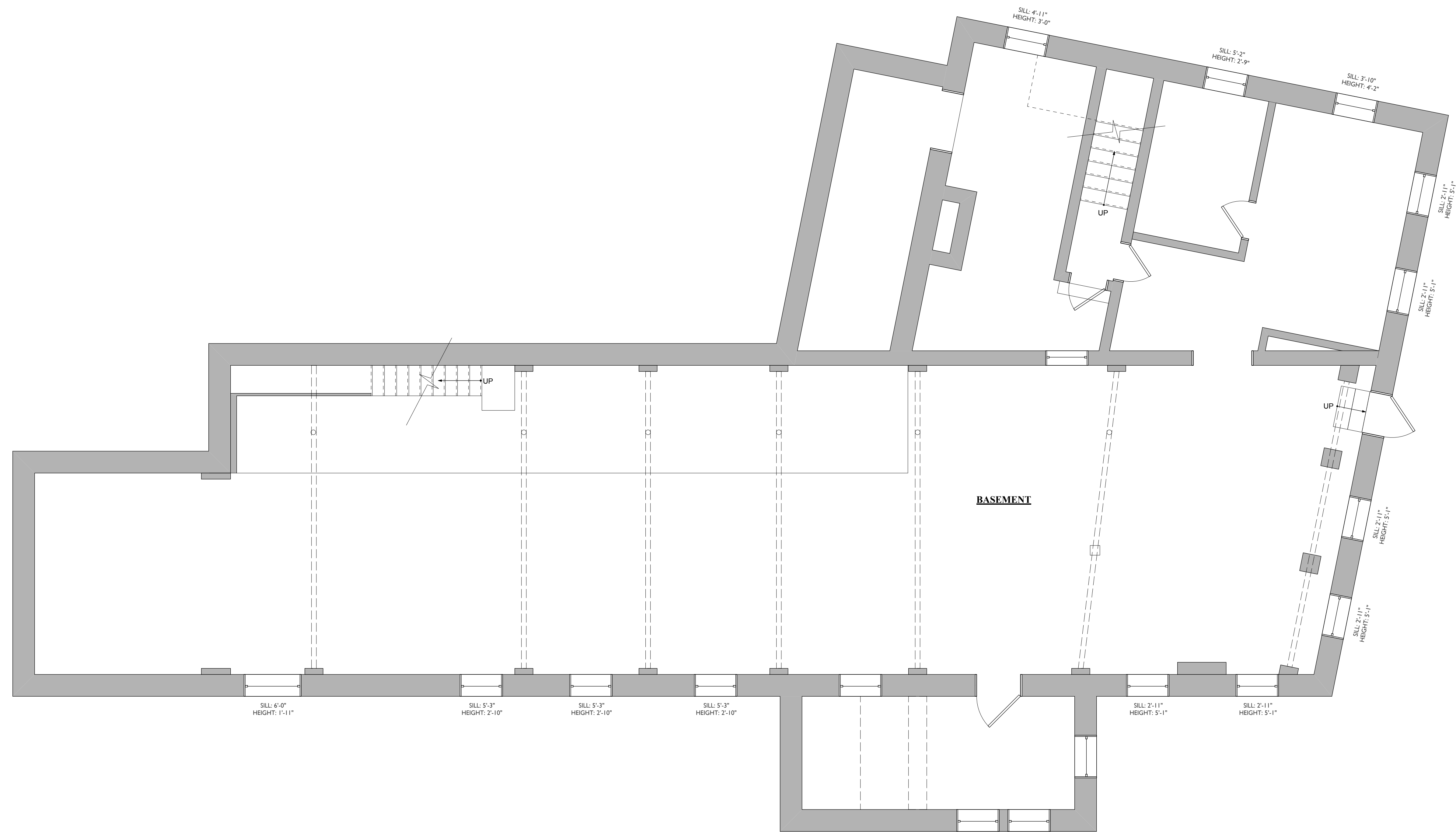
1 CHARLES STREET ELEVATION
Scale: 1/4" = 1'-0"





48 MARKET STREET
 NEWBURYPORT, MA 01950
 T. 978.465.3535
 WWW.SCOTTBROWNARCHITECT.COM

ADDITIONS/ALTERATIONS TO:
JOHN HANCOCK LODGE
 275 BROADWAY, METHUEN, MA



REVISION & REISSUE NOTES

No.	Date	Notes

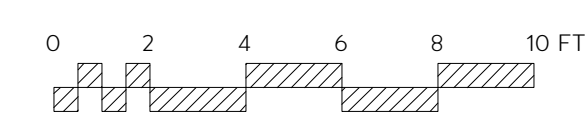
Project # 2020-69	Project Manager M.L.	Date 8/4/21
----------------------	-------------------------	----------------

Scale: AS NOTED

**EXISTING BASEMENT
 FLOOR PLAN**

EC1

COPYRIGHT 2021 SCOTT M. BROWN, ARCHITECTS



1 EXISTING BASEMENT FLOOR PLAN
 Scale: 1/4" = 1'-0"

ADDITIONS/ALTERATIONS TO:
JOHN HANCOCK LODGE
275 BROADWAY, METHUEN, MA

REVISION & REISSUE NOTES

No.	Date	Notes

Project # 2020-69	Project Manager M.L.	Date 8/4/21
----------------------	-------------------------	----------------

Scale: AS NOTED

EXISTING PHOTOS

EC9



1 JOHN HANCOCK LODGE (FROM BROADWAY)



2 JOHN HANCOCK LODGE (FROM PLEASANT)



3 JOHN HANCOCK LODGE (FROM PARKING LOT)



4 JOHN HANCOCK LODGE (FROM CHARLES)