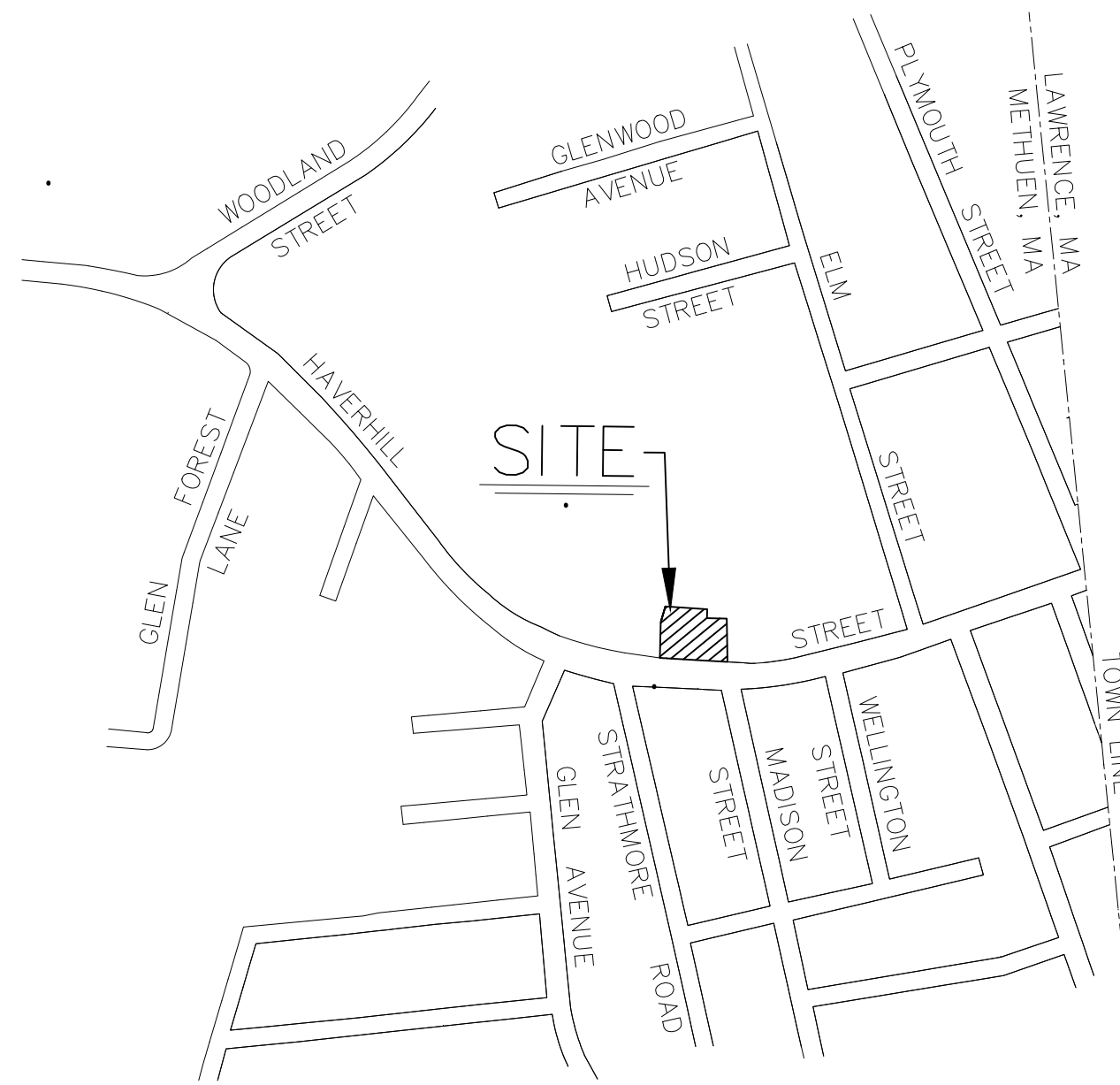


Proposed Site Plan Aroma Joe's Drive-Through Haverhill Street Methuen, Massachusetts

**Issued for Permitting
Not Approved for Construction**

Sign Key

M.U.T.C.D. Number	Specification		Desc.
	Width	Height	
R1-1	30"	30"	
R6-1R	36"	12"	
R5-1	30"	30"	
R7-8	12"	18"	
R1-5C	18"	24"	
R7-8P	12"	6"	



SITE LOCUS: 1"=400'

OWNER OF RECORD:

**Charles F. Perrault
Select Properties, LLC
79 Haverhill Street
Methuen, MA 01844**

APPLICANT:

**Amigos Coffee, LLC
46 Daniels Drive
Lee, NH 03861**

DEED REFERENCE:

NERD Book 10828, Page 107

ASSESSOR PARCELS:

**618-155-5B
618-155-5E
618-155-5J2**

Parking Summary Chart

Description	Size		Spaces	
	Required	Provided	Required	Provided
STANDARD SPACES	9 x 18	9 x 18	2	5
VAN ACCESSIBLE SPACES	8 x 18	8 x 18	1	1
TOTAL SPACES			3	6

Parking Requirements:

RESTAURANT 6 EMPLOYEES x 1 SPACES / 2 EMPLOYEE = 3
TOTAL PARKING REQUIRED = 3 SPACES

Zoning Summary Chart

Zoning District: BN (Neighborhood Business)

Zoning Regulation Requirements	Required	Provided
MINIMUM LOT AREA	10,000 SF	17,928 SF
FRONTAGE	80.0 Feet	156.0 Feet
FRONT YARD SETBACK	25 Feet	25.8 Feet
SIDE YARD SETBACK	15 Feet	31.2 Feet
REAR YARD SETBACK	30 Feet	54.6 Feet
MINIMUM LOT WIDTH	80 Feet	> 80 Feet
MAXIMUM BUILDING HEIGHT	40 Feet	< 40 Feet
MAXIMUM BUILDING COVERAGE	35.0 %	4.4 %

Sheet Index

Number	Drawing Title	Latest Issue
1 of 5	Cover Sheet	11/2/2023
2 of 5	Existing Conditions Plan	11/2/2023
3 of 5	Proposed Site Plan	11/2/2023
4 of 5	Site Details	11/2/2023
5 of 5	Site Details	11/2/2023
Number	Reference Drawings	Latest Issue
L1	Landscaping Plan prepared by Weinmayr/Tay Associates	8/10/2023
SL1	Proposed Site Lighting prepared by Reflex Lighting	8/22/2023
A201	Elevations Exterior prepared by TK Architects International	8/1/2023

2	REVISE PER PEER REVIEW AND ENGINEERING DEPT. COMMENTS	11/2/2023
1	REVISE PER ENGINEERING DEPT. COMMENTS	9/22/2023
Revision No.	Revision Description	

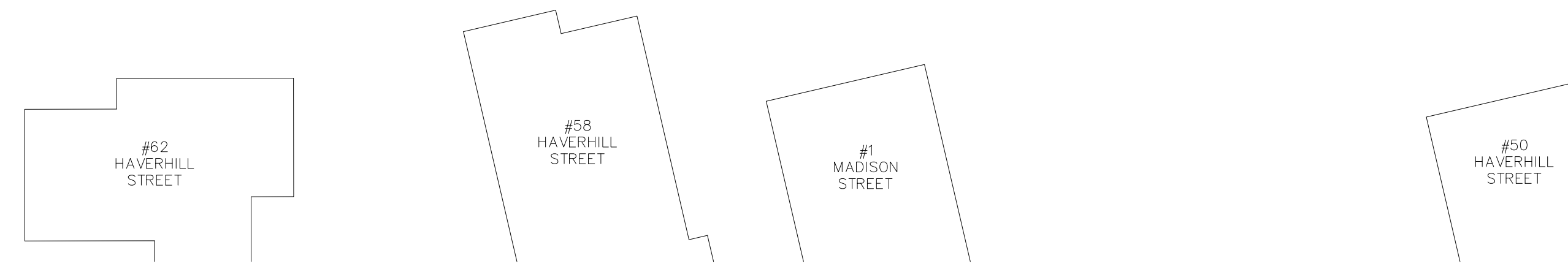
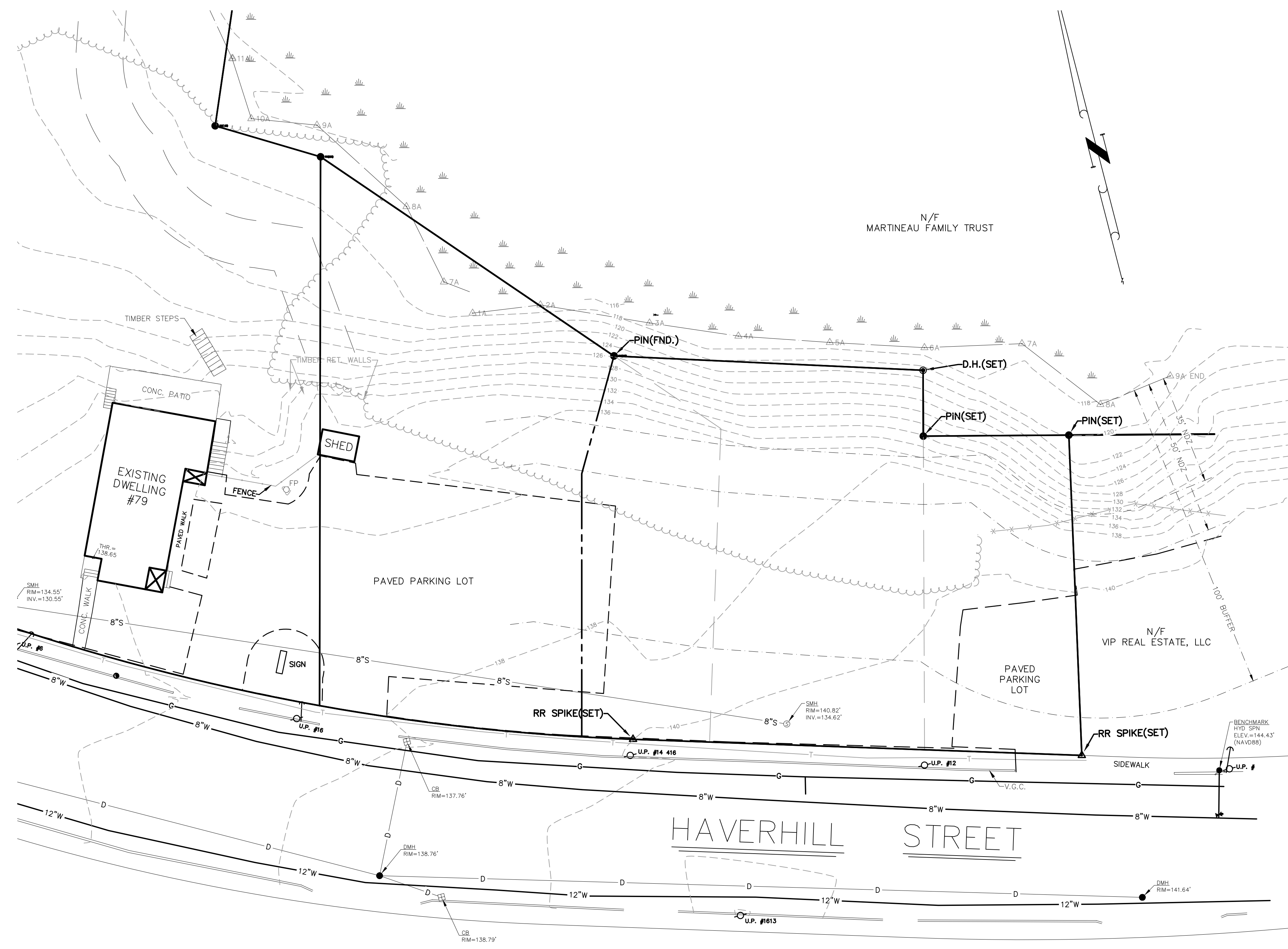
COVER SHEET VP HAVERHILL STREET METHUEN, MASS.

PREPARED FOR: AMIGOS COFFEE, LLC
DATE: JULY 31, 2023
SCALE: 1"=20'

**andover
consultants
inc.**
1 East River Place
Methuen, Mass. 01844
Telephone: 978-687-3828

Dennis A. Griecci
Reg. Prof. Engineer

0 10 20 30 40 Ft.
0 2.5 5 10 Meter



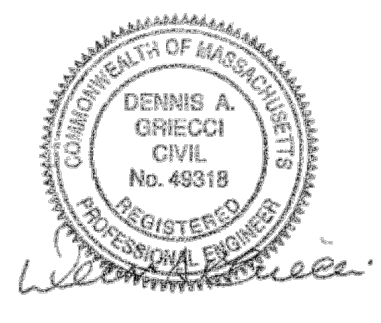
2	NO REVISIONS THIS SHEET	11/2/2023
1	NO REVISIONS THIS SHEET	9/22/2023
Revision No.	Revision Description	Date

**EXISTING CONDITIONS PLAN
VP HAVERHILL STREET
METHUEN, MASS.**

PREPARED FOR: AMIGOS COFFEE, LLC
DATE: JULY 31, 2023
SCALE: 1"=20'

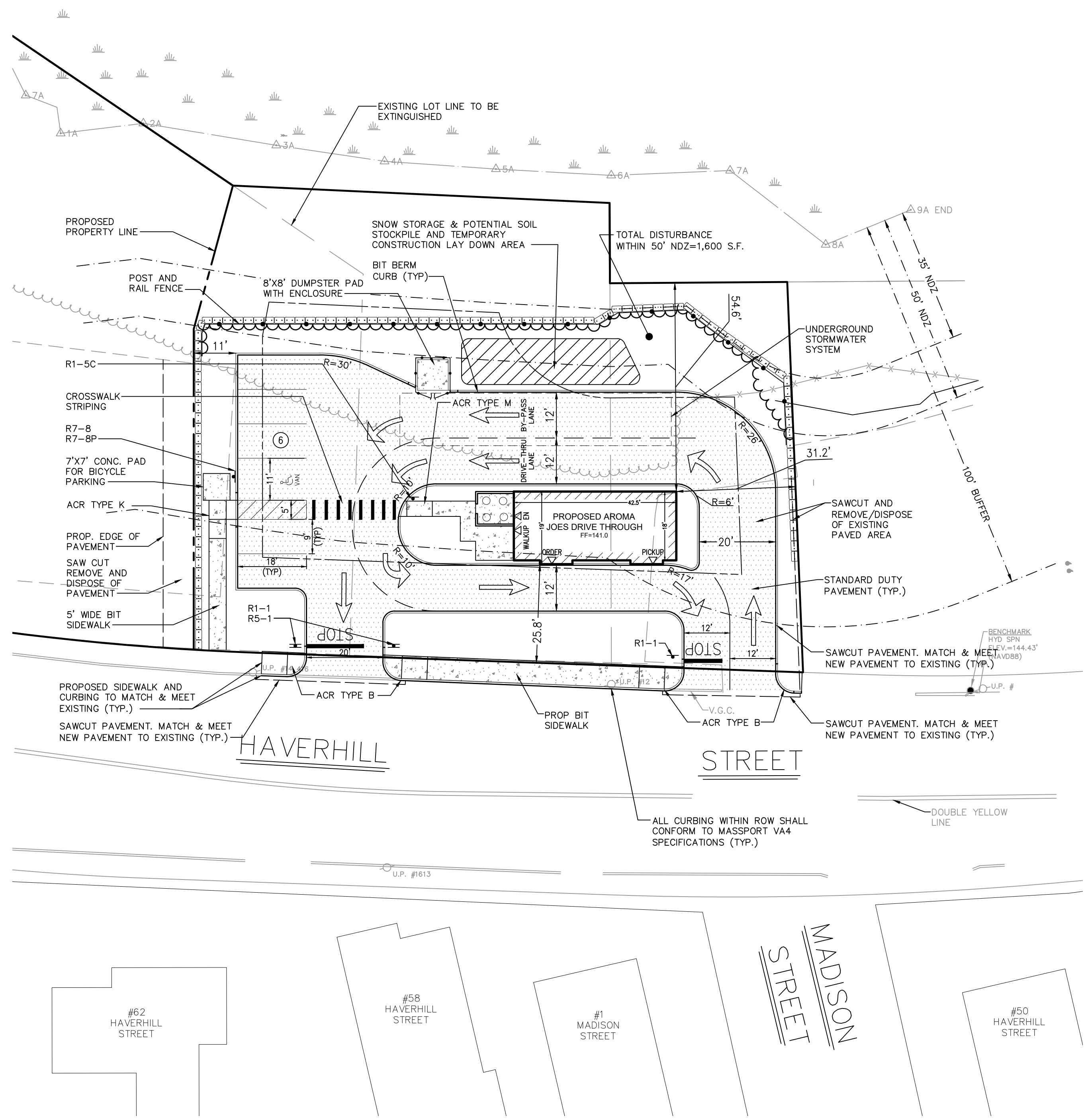


1 East River Place
Methuen, Mass. 01844
Telephone: 978-687-3828

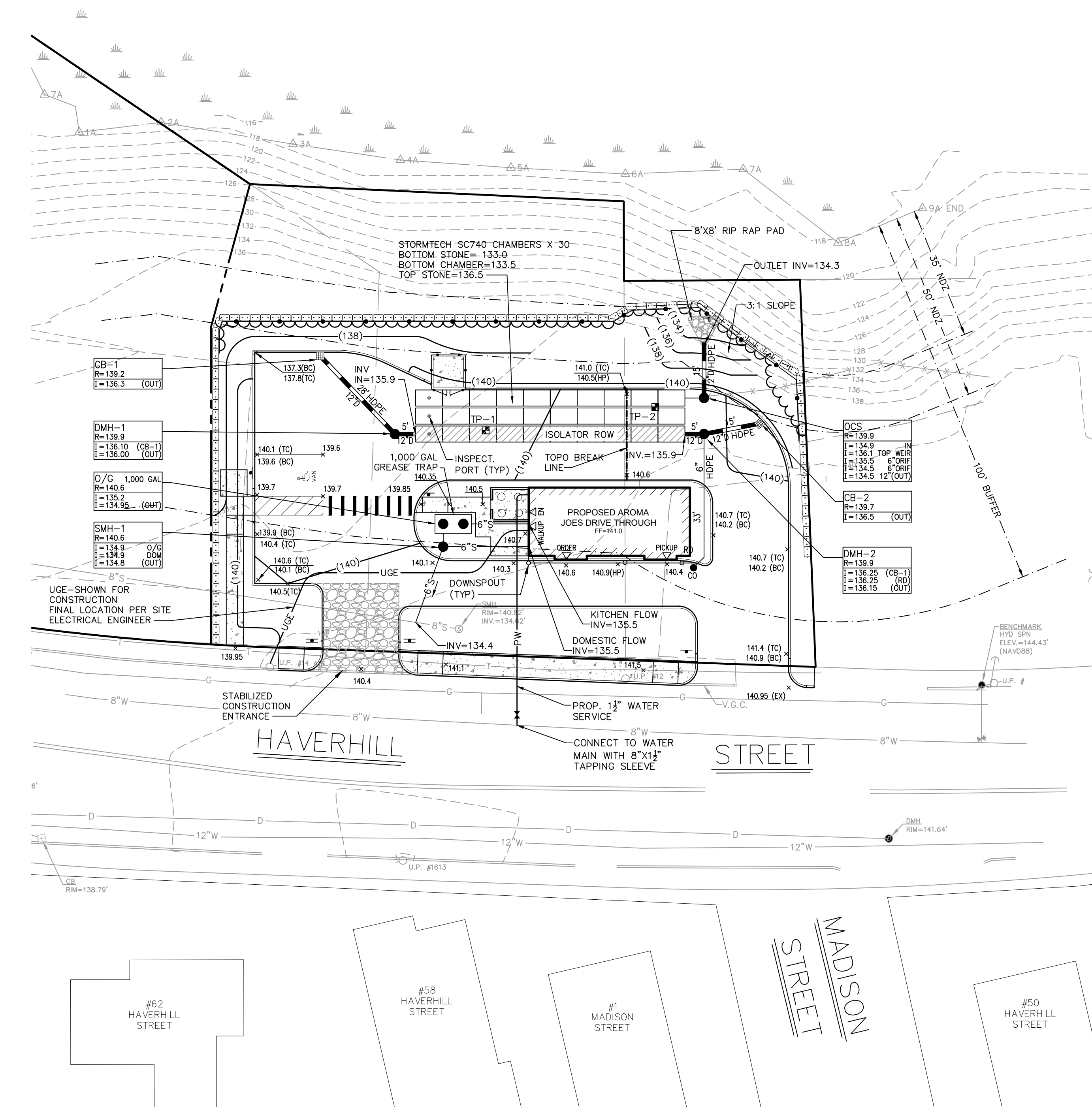


Dennis A. Griecci
Reg. Prof. Engineer





LAYOUT & MATERIALS



GRADING & UTILITY

- NOTE:
1. ALL SIGNS AND PAVEMENT MARKINGS TO BE INSTALLED WITHIN PROJECT SITE SHALL CONFORM TO APPLICABLE SPECIFICATIONS OF THE MANUAL OF UNIFORM TRAFFIC CONTROL DEVICES (MUTCD).
 2. ALL CURBING WITHIN RIGHT-OF-WAY (ROW) SHALL CONFORM TO MASS DOT VA4 SPECIFICATIONS.
 3. ALL CURBING REMOVED WITHIN ROW SHALL BE RETURNED TO THE METHUEN HIGHWAY YARD.
 4. SIGNS, LANDSCAPING AND OTHER FEATURES LOCATING WITH SIGHT TRIANGLE AREAS SHALL BE DESIGNED, INSTALLED AND MAINTAINED SO AS NOT TO EXCEED 2.5- FEET IN HEIGHT. SNOW WINDROWS LOCATED WITHIN SIGHT TRIANGLES AREAS THAT EXCEED 3.5- FEET IN HEIGHT OR THAT WOULD OTHERWISE INHIBIT SIGHT LINES SHALL BE PROMPTLY REMOVED.

2	REVISE PER PEER REVIEW AND ENGINEERING DEPT. COMMENTS	11/2/2023
1	REVISE PER ENGINEERING DEPT. COMMENTS	9/22/2023
Revision No.	Revision Description	Date

**PROPOSED SITE PLAN
VP HAVERHILL STREET
METHUEN, MASS.**

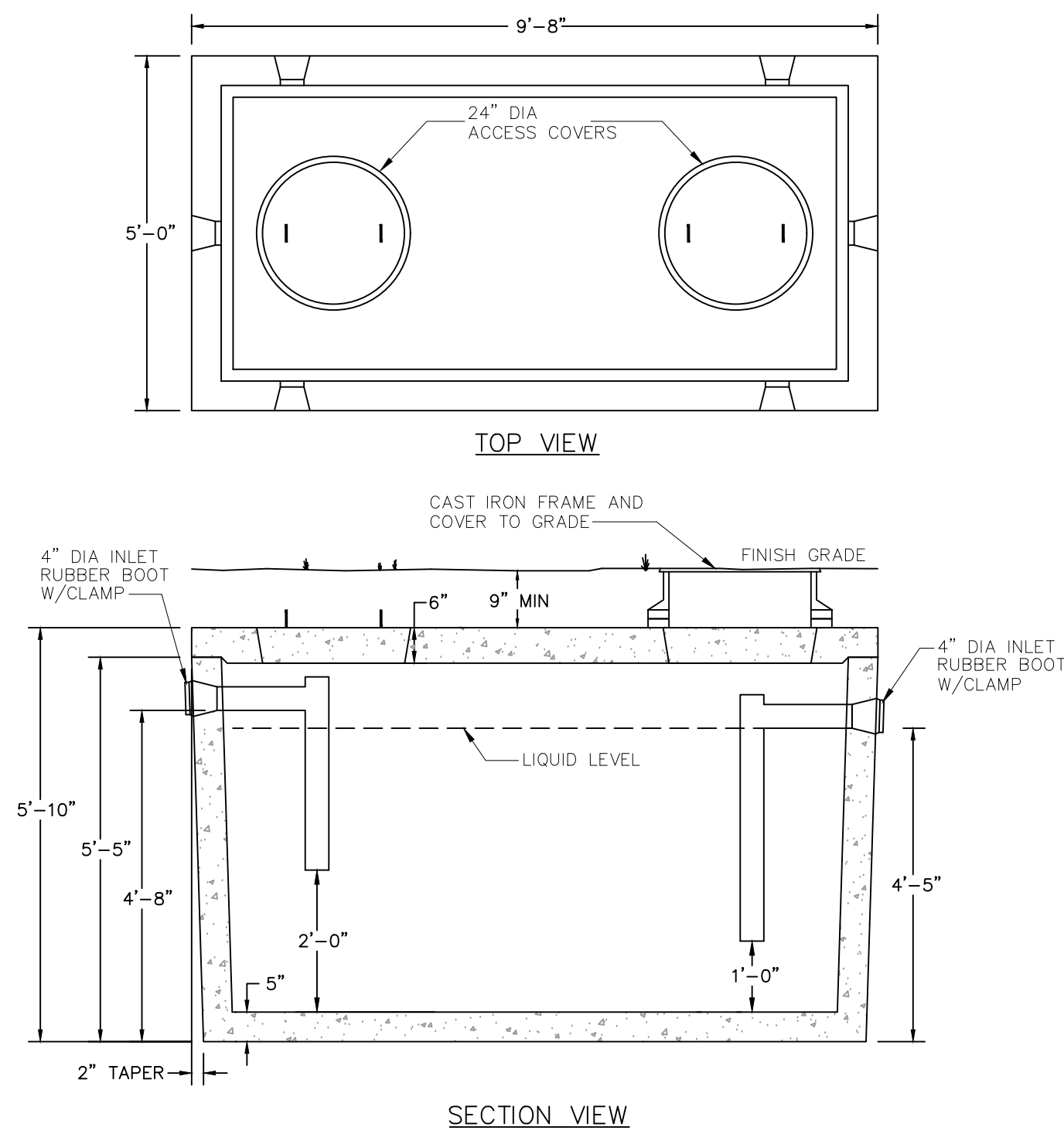
PREPARED FOR: AMIGOS COFFEE, LLC
DATE: JULY 31, 2023
SCALE: 1"=20'

andover
consultants
inc.

1 East River Place
Methuen, Mass. 01844
Telephone: 978-687-3828

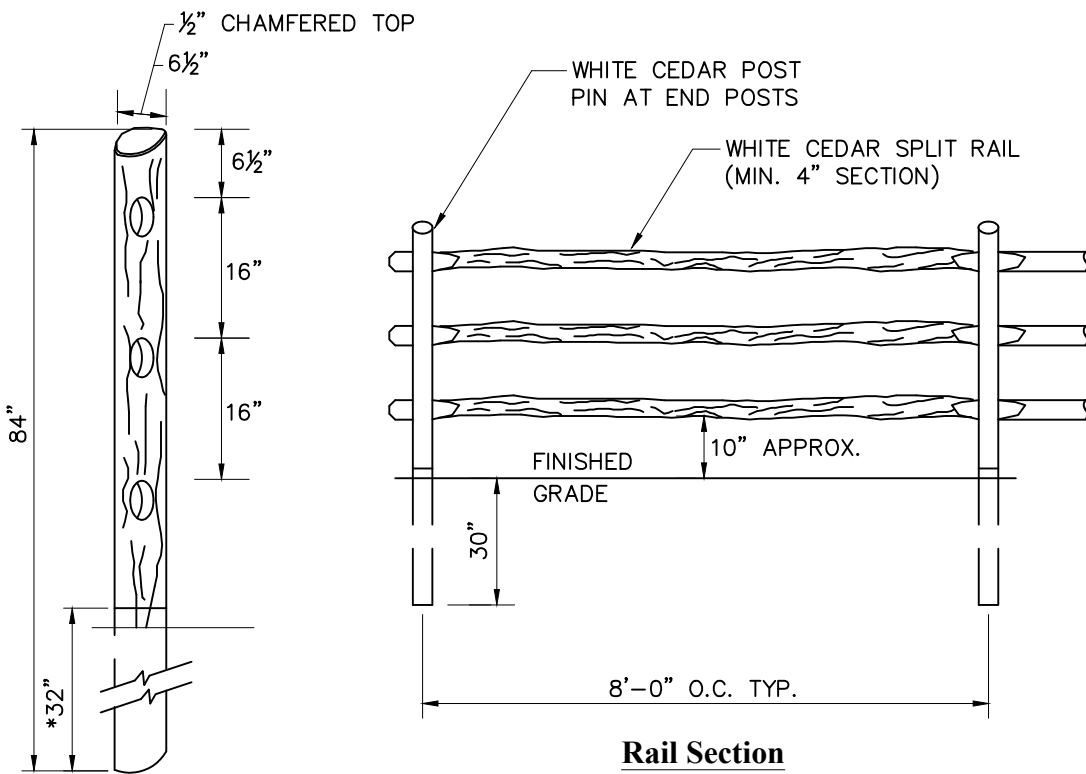
Dennis A. Grieci
Reg. Prof. Engineer

0 10 20 30 40 Ft.
0 2.5 5 10 Meter

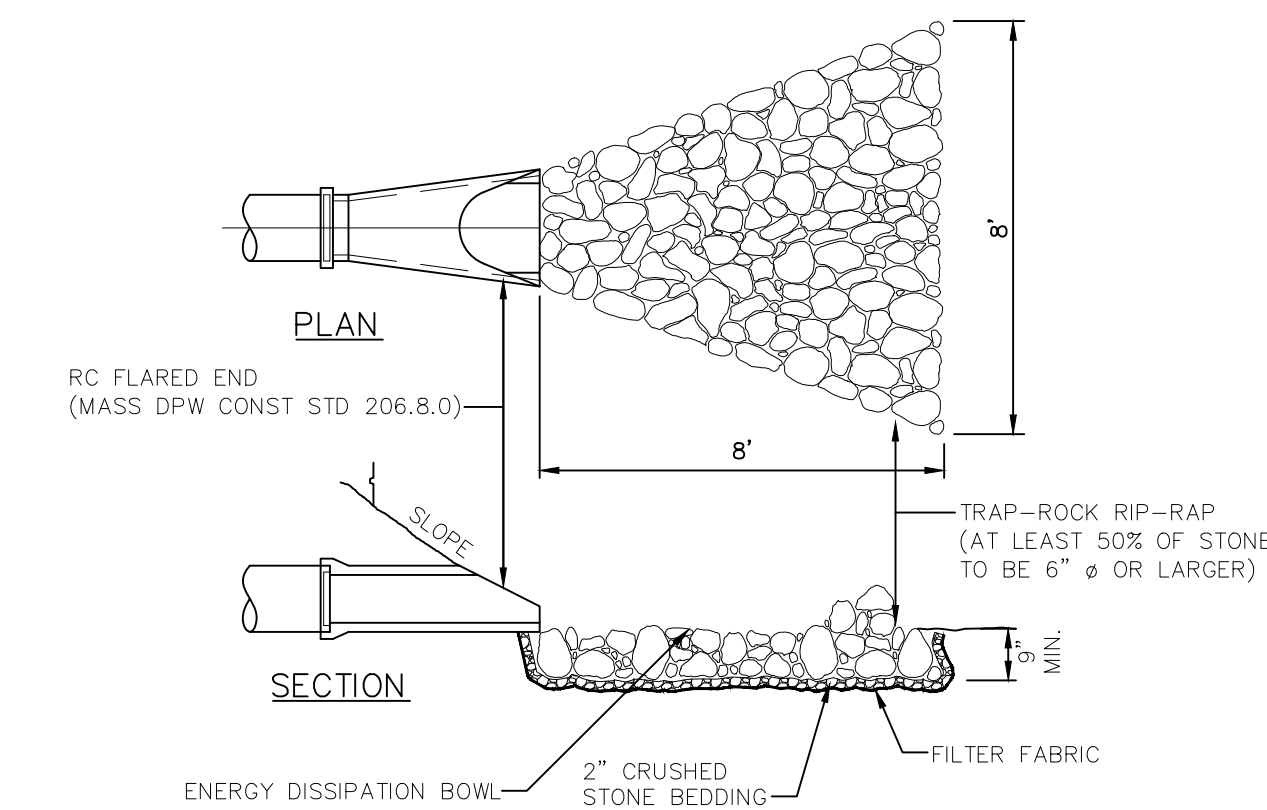


1000 GALLON OIL/GREASE TRAP DETAIL
NOT TO SCALE

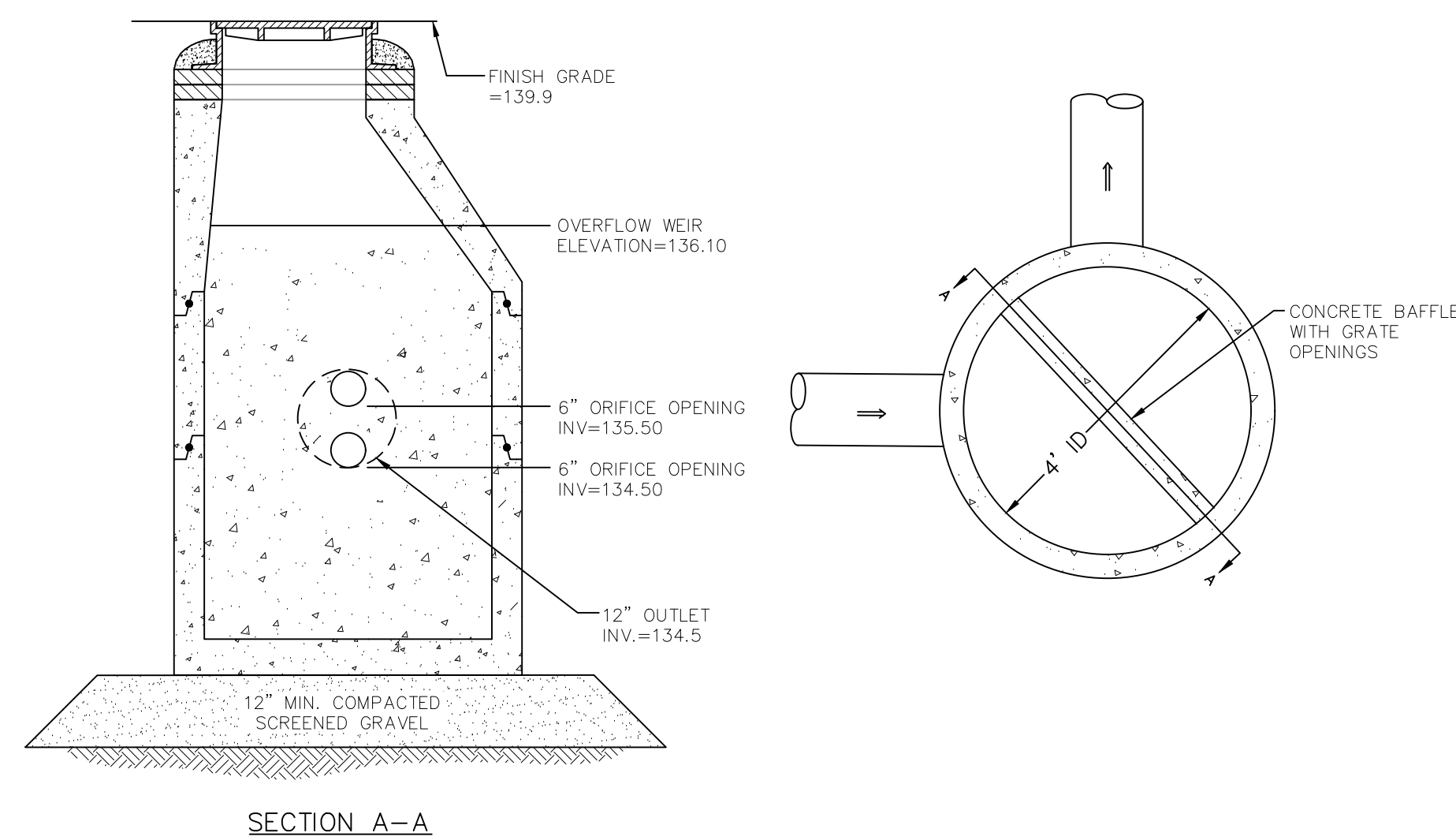
- NOTES:
1. CONCRETE: 4,000 PSI MINIMUM AFTER 28 DAYS.
 2. CONSTRUCTION OF GREASE TRAPS CONFORMS WITH 310 CMR, SECTION 15.00 DEP TITLE 5 REGS.
 3. ALL REINFORCEMENT PER ASTM D1227.
 4. TEES AND BAFFLES SOLD SEPARATELY.
 5. TONGUE AND GROOVE JOINT SEALED WITH BUTYL RESIN.
 6. DESIGNED FOR AASHTO HS-20 LOADING; 1 TO 5 FT. COVER.
 7. GREASE TRAP SHALL HAVE A DOUBLE ASPHALT EXTERIOR COATING.



POST AND RAIL FENCE DETAIL
NOT TO SCALE

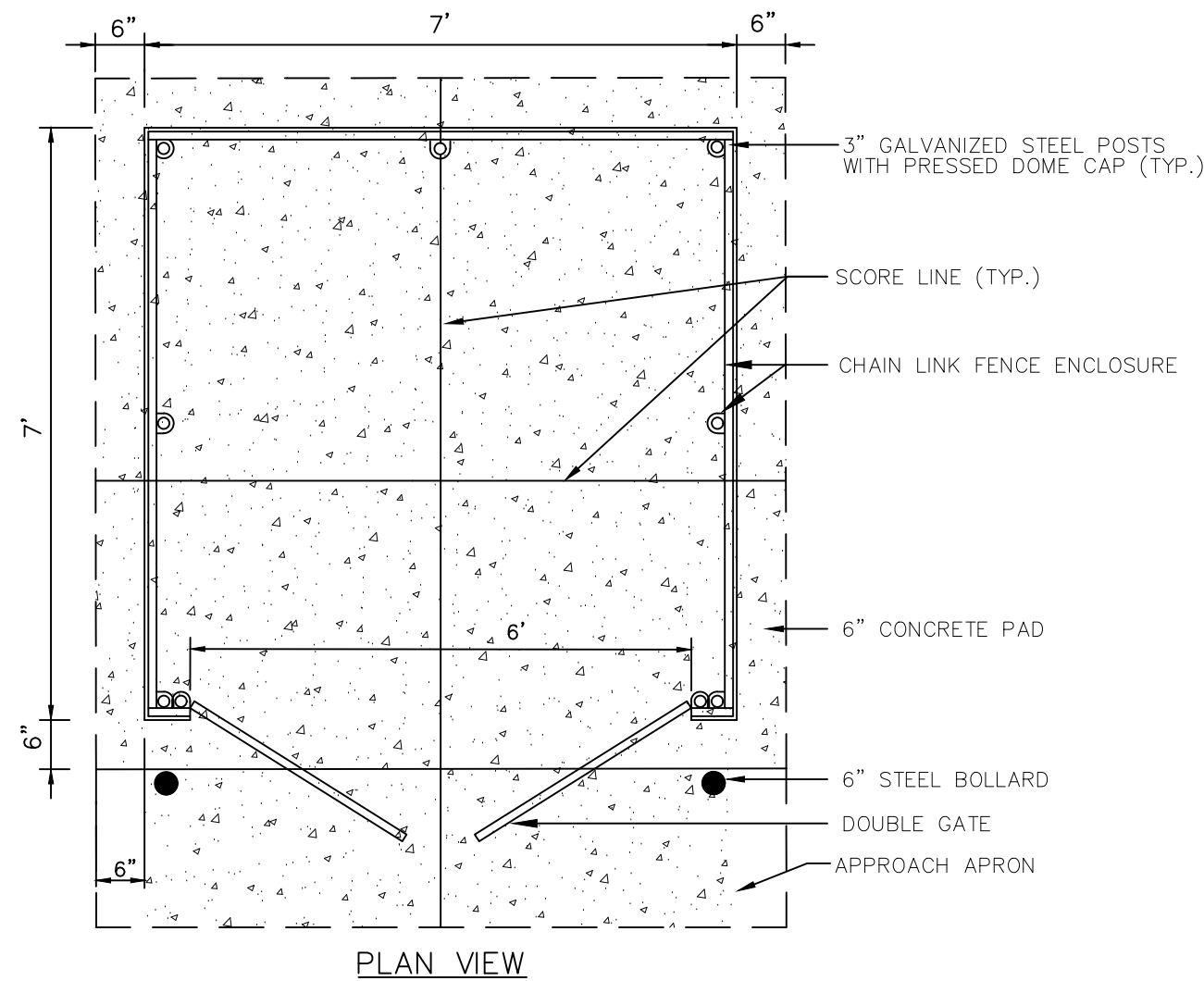


DETAIL FOR FLARED END
NOT TO SCALE

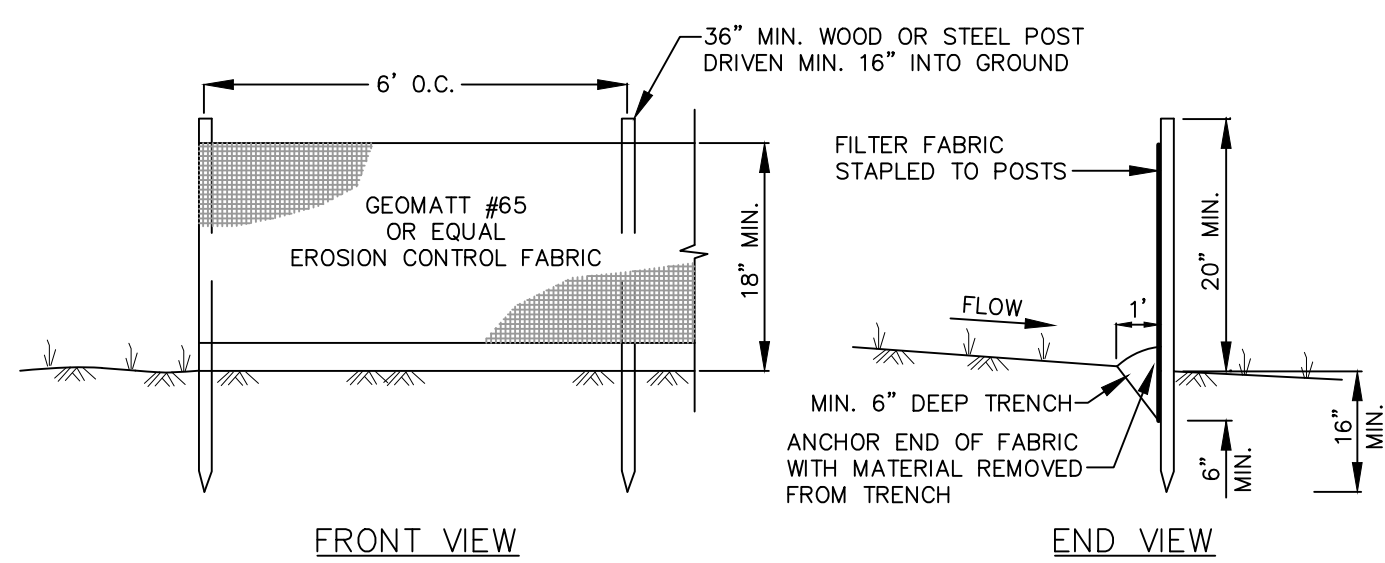


OUTLET CONTROL STRUCTURE
NOT TO SCALE

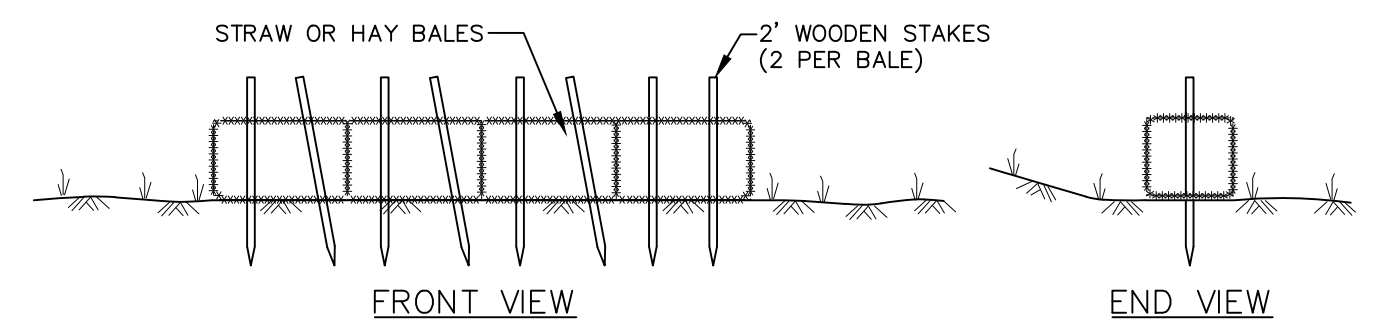
- NOTES:
1. ALL SECTIONS SHALL BE DESIGNED FOR HS-20 LOADING.
 2. PROVIDE OPENINGS FOR PIPES WITH 2" MAX. CLEARANCE TO OUTSIDE OF PIPE. MORTAR ALL PIPE CONNECTIONS.
 3. JOINT SEALANT BETWEEN PRECAST SECTIONS SHALL BE PREFORMED BUTYL RUBBER.
 4. DRAIN MANHOLE FRAME AND COVER SHALL BE SET IN FULL MORTAR BED. ADJUST TO GRADE WITH CLAY BRICK AND MORTAR (2 BRICK COURSES TYPICALLY, 5 BRICK COURSES MAXIMUM).



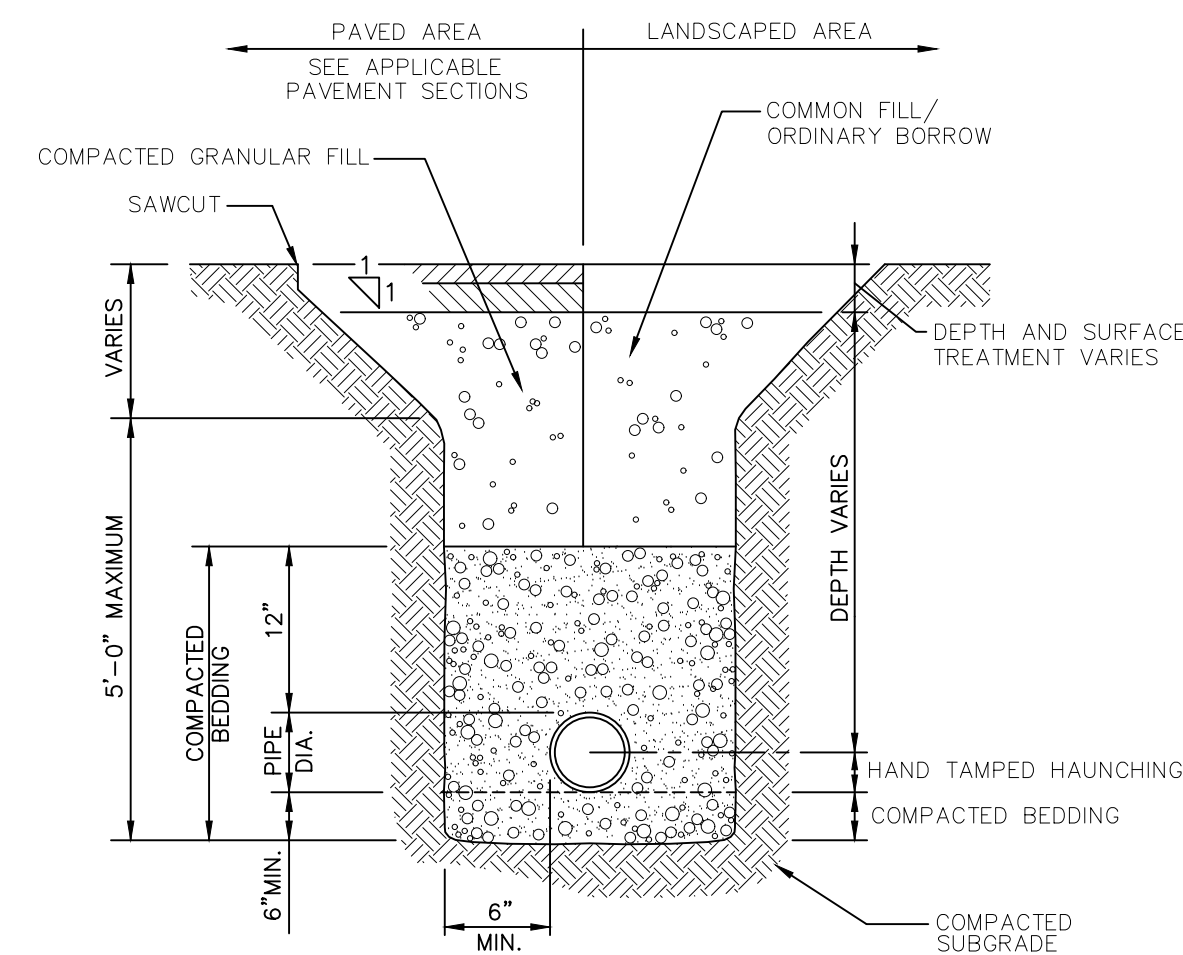
DUMPSTER PAD ENCLOSURE
NOT TO SCALE



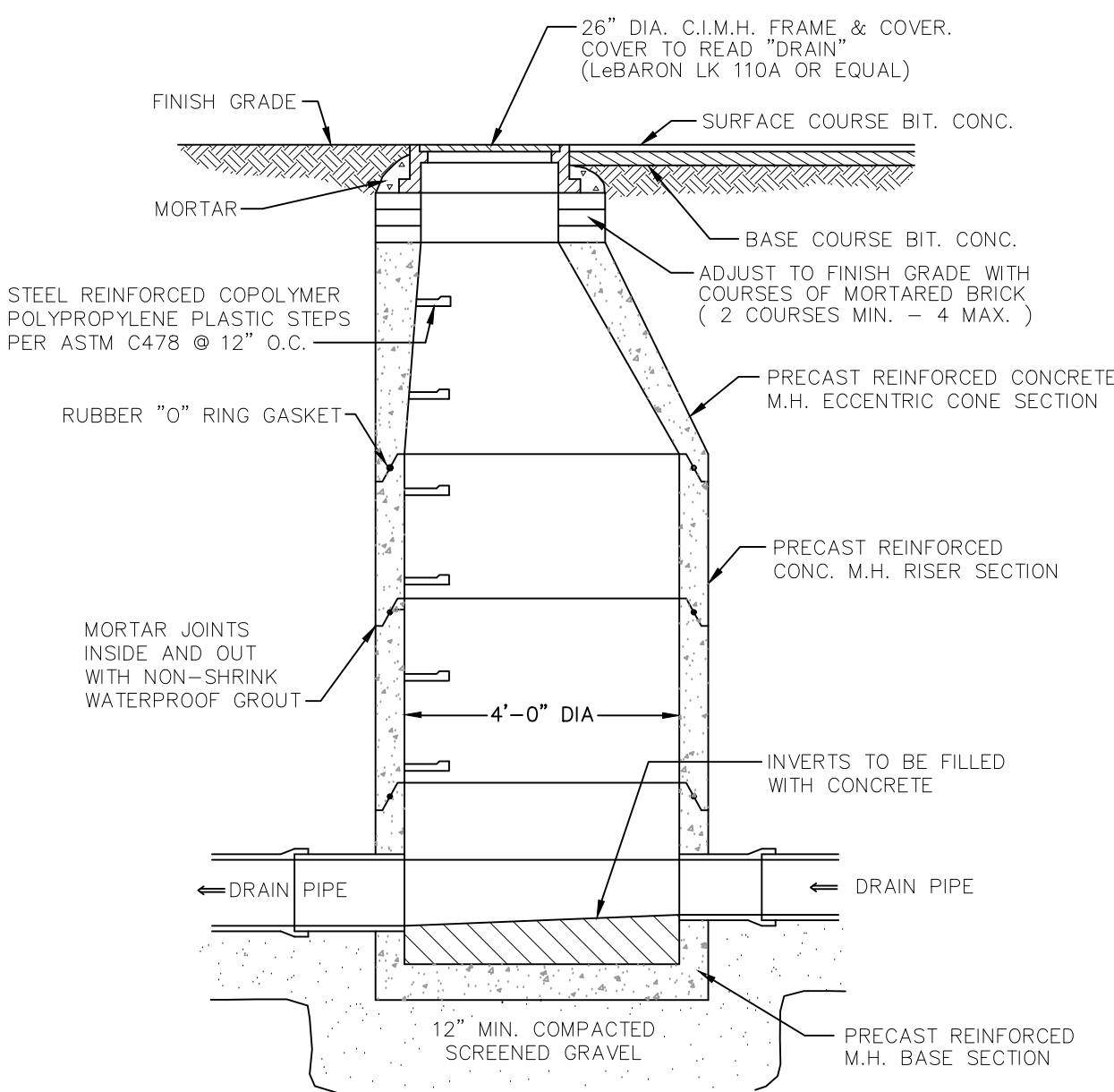
FABRIC SILTATION FENCE DETAIL
NOT TO SCALE



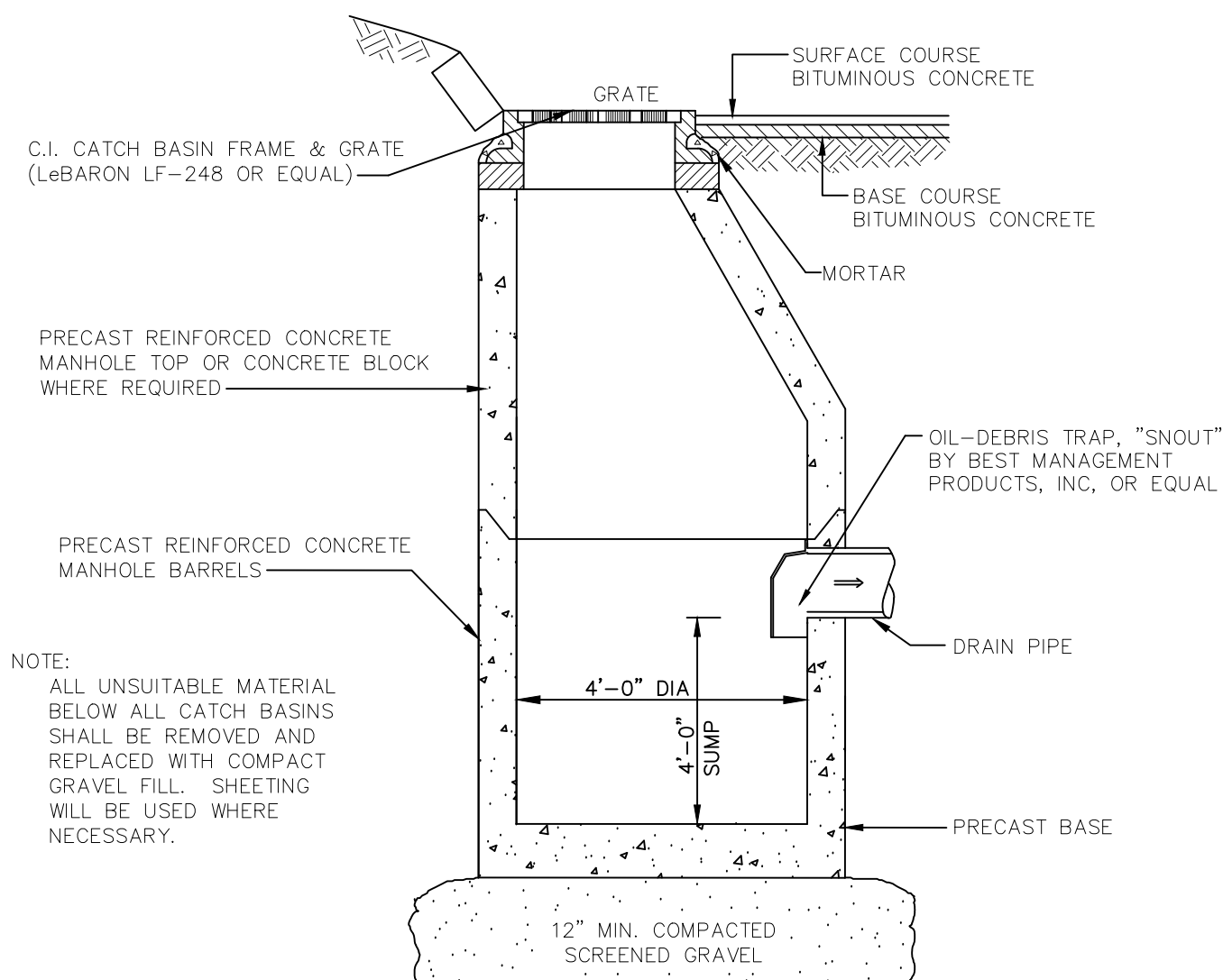
HAY BALE SILTATION BARRIER DETAIL
NOT TO SCALE



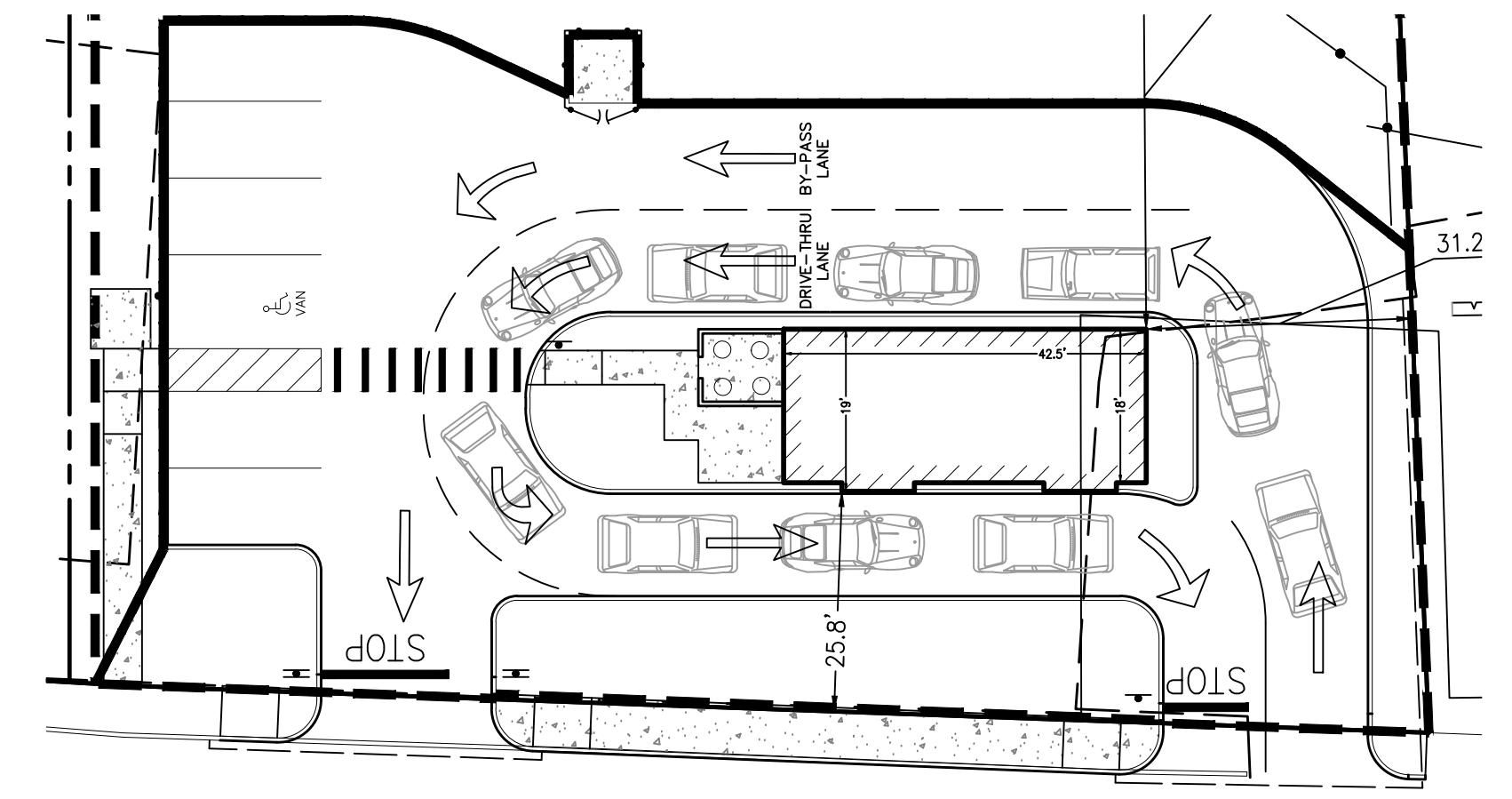
PIPE TRENCH TYPICAL SECTION
NOT TO SCALE



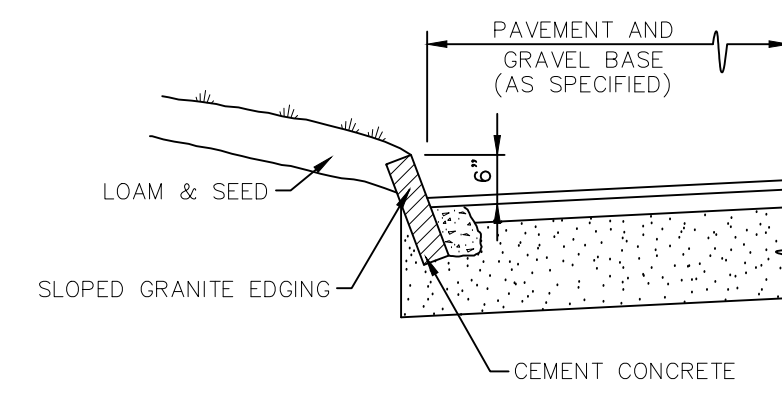
TYPICAL DRAIN MANHOLE DETAIL
NOT TO SCALE



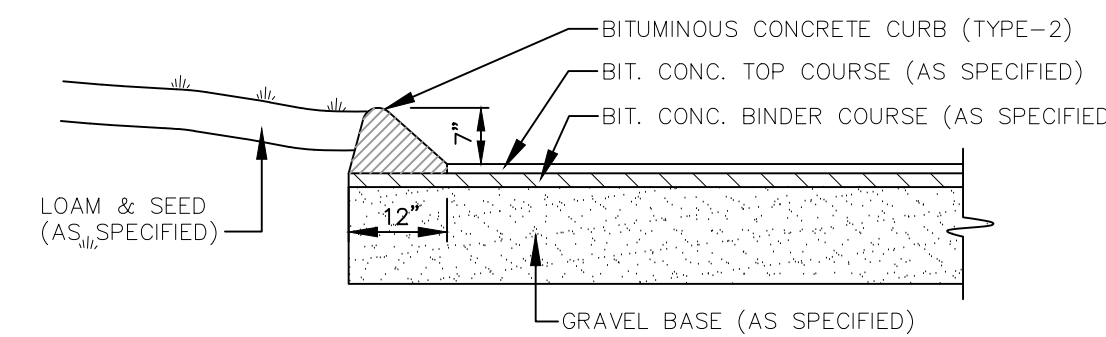
DEEP SUMP HOODED CATCH BASIN (TYP.)
NOT TO SCALE



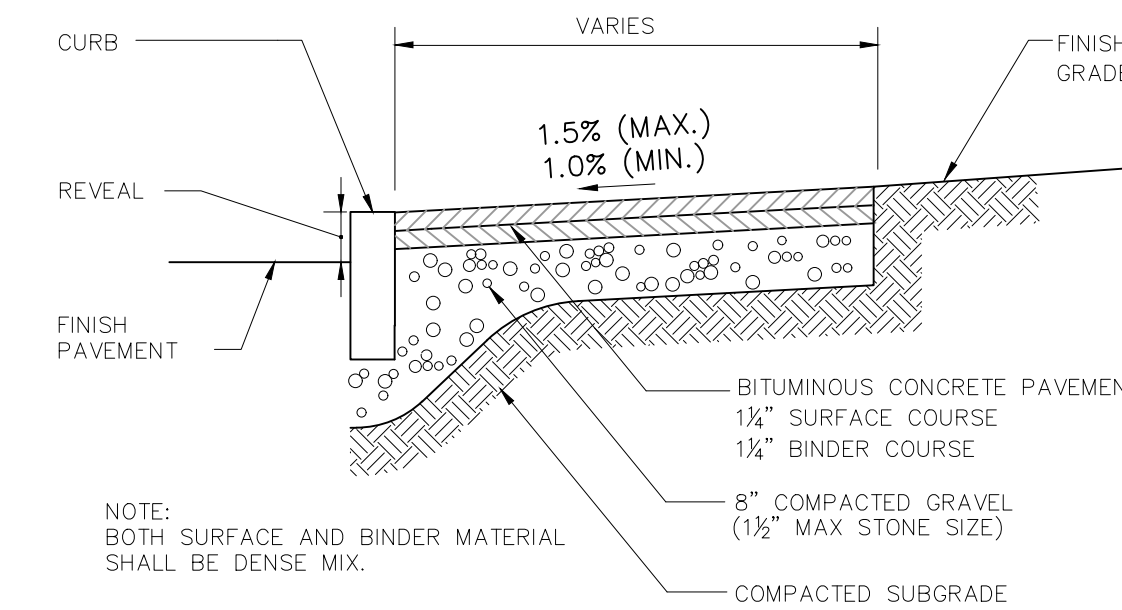
CAR QUEUING DETAIL
SCALE: 1"=20'



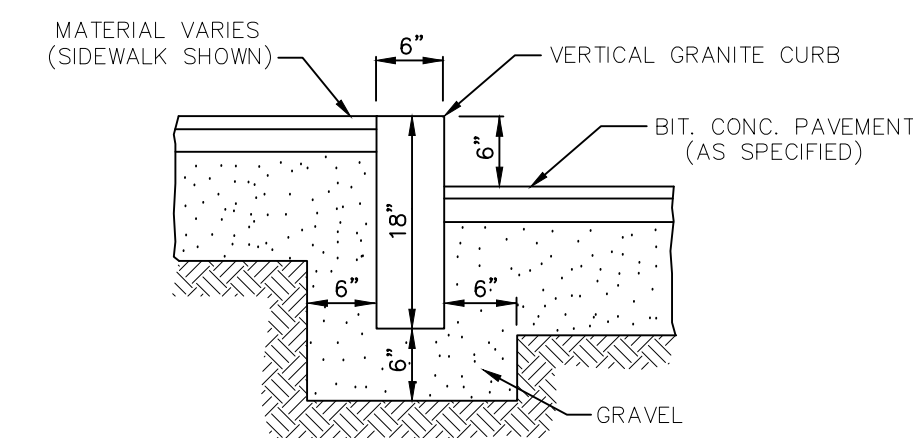
SLOPED GRANITE EDGING DETAIL
(SEE MASS DPW CONST. STD. 106.5.0)
NOT TO SCALE



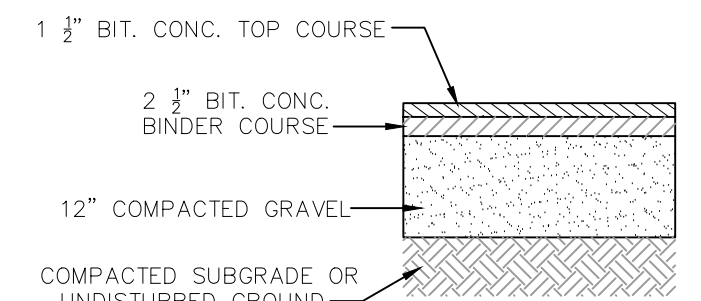
BITUMINOUS CONCRETE CURB DETAIL
(SEE MASS D.P.W. CONST. STD. 106.2.0)
NOT TO SCALE



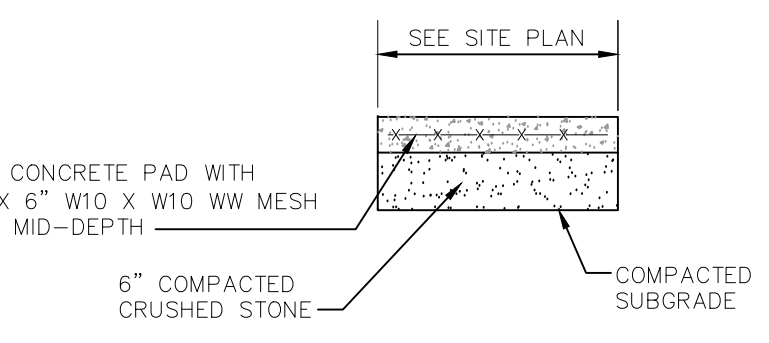
BITUMINOUS CONCRETE SIDEWALK
NOT TO SCALE



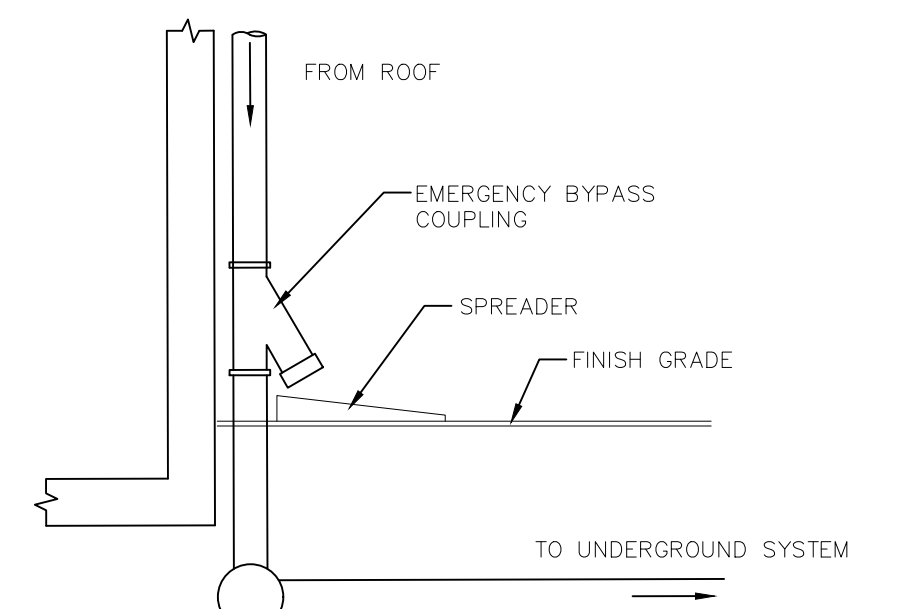
VERTICAL GRANITE CURB DETAIL
NOT TO SCALE



PAVEMENT SECTION
NOT TO SCALE



DUMPSTER PAD SECTION
NOT TO SCALE



ROOF DRAIN W/OVERFLOW
NOT TO SCALE

2	REVISE PER PEER REVIEW AND ENGINEERING DEPT. COMMENTS	11/2/2023
1	NO REVISIONS THIS SHEET	9/22/2023
Revision No.	Revision Description	Date

SITE DETAILS
VP HAVERHILL STREET
METHUEN, MASS.

PREPARED FOR: AMIGOS COFFEE, LLC
DATE: JULY 31, 2023
SCALE: 1"=20'



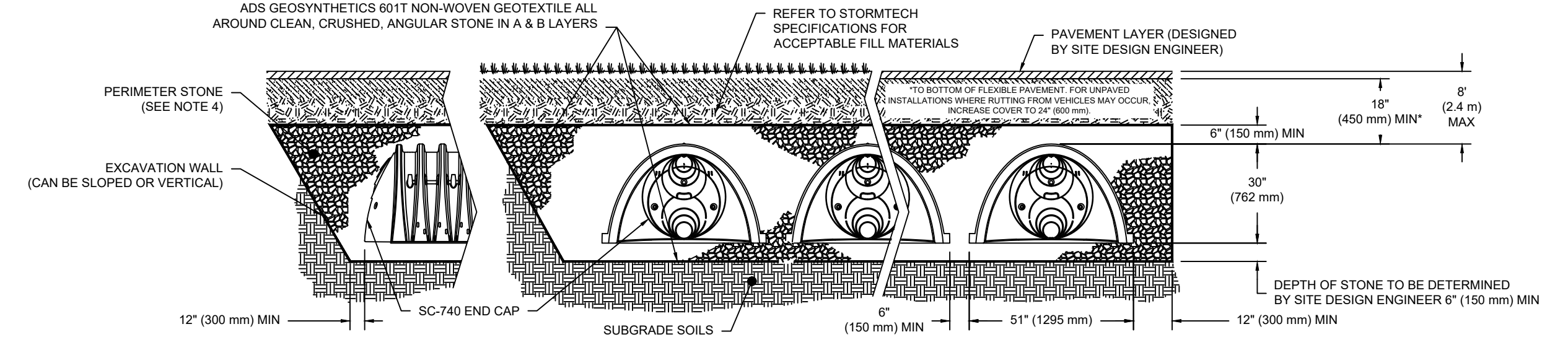
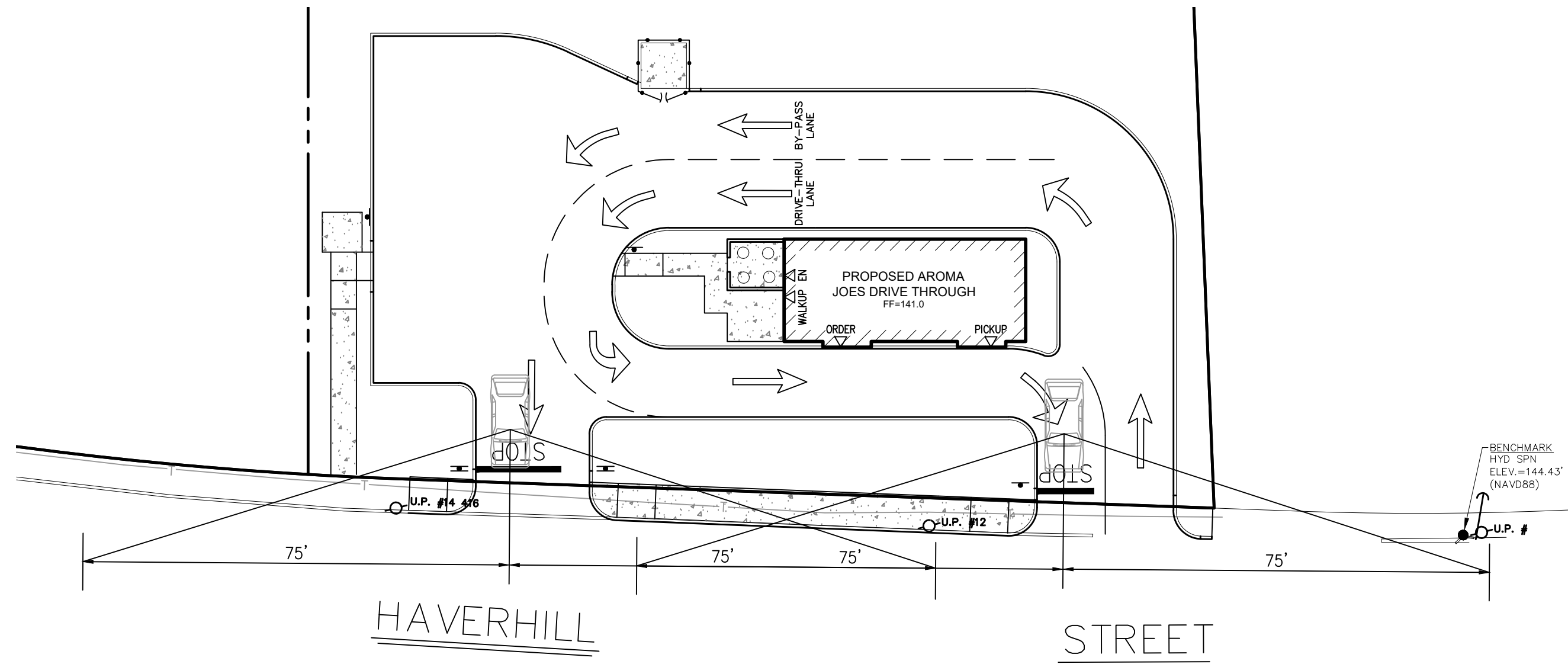
1 East River Place
Methuen, Mass. 01844
Telephone: 978-687-3828

Dennis A. Grieci
Reg. Prof. Engineer



STORMTECH SC-740 CHAMBER SYSTEMS

- PLEASE NOTE:
- THE LISTED AASHTO DESIGNATIONS ARE FOR GRADATIONS ONLY. THE STONE MUST ALSO BE CLEAN, CRUSHED, ANGULAR. FOR EXAMPLE, A SPECIFICATION FOR #4 STONE WOULD STATE: "CLEAN, CRUSHED, ANGULAR NO. 4 (AASHTO M43) STONE".
 - STORMTECH COMPACTION REQUIREMENTS ARE MET FOR 'A' LOCATION MATERIALS WHEN PLACED AND COMPACTED IN 6" (150 mm) MAX LIFTS USING TWO FULL COVERAGES WITH A VIBRATORY COMPACTION.
 - WHERE INFILTRATION SURFACES MAY BE COMPROMISED BY COMPACTION, FOR STANDARD DESIGN LOAD CONDITIONS, A FLAT SURFACE MAY BE ACHIEVED BY RAKING OR DRAGGING WITHOUT COMPACTION EQUIPMENT. FOR SPECIAL LOAD DESIGNS, CONTACT STORMTECH FOR COMPACTION REQUIREMENTS.
 - ONCE LAYER 'C' IS PLACED, ANY SOIL/MATERIAL CAN BE PLACED IN LAYER 'D' UP TO THE FINISHED GRADE. MOST PAVEMENT SUBBASE SOILS CAN BE USED TO REPLACE THE MATERIAL REQUIREMENTS OF LAYER 'C' OR 'D' AT THE SITE DESIGN ENGINEER'S DISCRETION.



NOTES:

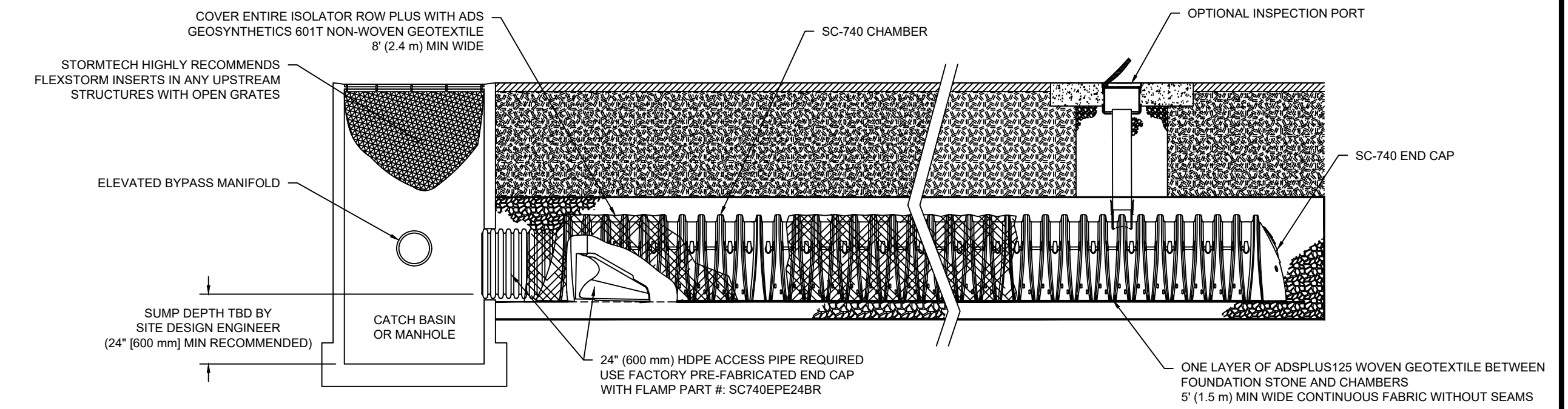
- CHAMBERS SHALL MEET THE REQUIREMENTS OF ASTM F2418, "STANDARD SPECIFICATION FOR POLYPROPYLENE (PP) CORRUGATED WALL STORMWATER COLLECTION CHAMBERS".
- SC-740 CHAMBERS SHALL BE DESIGNED IN ACCORDANCE WITH ASTM F2787 "STANDARD PRACTICE FOR STRUCTURAL DESIGN OF THERMOPLASTIC CORRUGATED WALL STORMWATER COLLECTION CHAMBERS".
- THE SITE DESIGN ENGINEER IS RESPONSIBLE FOR ASSESSING THE BEARING RESISTANCE (ALLOWABLE BEARING CAPACITY) OF THE SUBGRADE SOILS AND THE DEPTH OF FOUNDATION STONE WITH CONSIDERATION FOR THE RANGE OF EXPECTED SOIL MOISTURE CONDITIONS.
- PERIMETER STONE MUST BE EXTENDED HORIZONTALLY TO THE EXCAVATION WALL FOR BOTH VERTICAL AND SLOPED EXCAVATION WALLS.
- REQUIREMENTS FOR HANDLING AND INSTALLATION:
 - TO MAINTAIN THE WIDTH OF CHAMBERS DURING SHIPPING AND HANDLING, CHAMBERS SHALL HAVE INTEGRAL, INTERLOCKING STACKING LUGS.
 - TO ENSURE A SECURE JOINT DURING INSTALLATION AND BACKFILL, THE HEIGHT OF THE CHAMBER JOINT SHALL NOT BE LESS THAN 2".
 - TO ENSURE THE INTEGRITY OF THE ARCH SHAPE DURING INSTALLATION, a) THE ARCH STIFFNESS CONSTANT AS DEFINED IN SECTION 6.2.8 OF ASTM F2418 SHALL BE GREATER THAN OR EQUAL TO 500 LBS/FT². AND b) TO RESIST CHAMBER DEFORMATION DURING INSTALLATION AT ELEVATED TEMPERATURES (ABOVE 73° F / 23° C), CHAMBERS SHALL BE PRODUCED FROM REFLECTIVE GOLD OR YELLOW COLORS.

Note:

- SIGNS, LANDSCAPING AND OTHER FEATURES LOCATED WITHIN SIGHT TRIANGLE AREAS SHALL BE DESIGNED, INSTALLED, AND MAINTAINED SO AS TO NOT EXCEED 2.5- FEET IN HEIGHT. SNOW WINDROWS LOCATED WITHIN SIGHT TRIANGLE AREAS THAT EXCEED 3.5- FEET IN HEIGHT OR THAT WOULD OTHERWISE INHIBIT SIGHT LINES SHALL BE PROMPTLY REMOVED.

SIGHT DISTANCE TRIANGLES

SCALE: 1"=20'



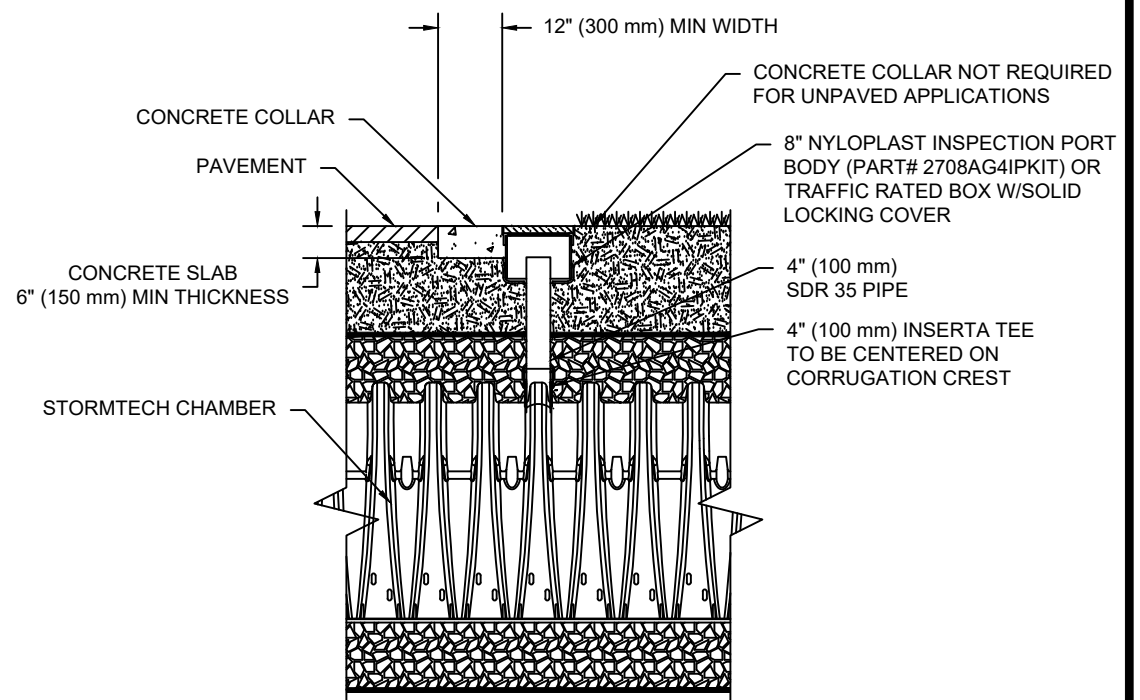
SC-740 ISOLATOR ROW PLUS DETAIL
NTS

INSPECTION & MAINTENANCE

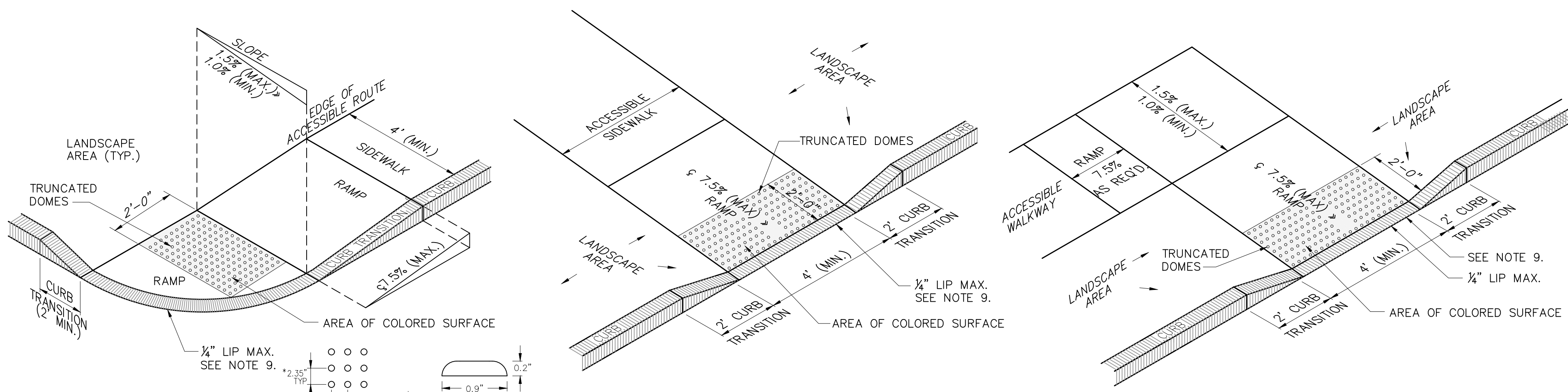
- STEP 1) INSPECT ISOLATOR ROW PLUS FOR SEDIMENT
- INSPECTION PORTS (IF PRESENT)
 - REMOVE/OPEN LID ON NYLOPLAST INLINE DRAIN
 - REMOVE AND CLEAN FLEXSTORM FILTER IF INSTALLED
 - USING A FLASHLIGHT AND STADIA ROD, MEASURE DEPTH OF SEDIMENT AND RECORD ON MAINTENANCE LOG
 - LOWER A CAMERA INTO ISOLATOR ROW PLUS FOR VISUAL INSPECTION OF SEDIMENT LEVELS (OPTIONAL)
 - IF SEDIMENT IS AT OR ABOVE 3" (80 mm) PROCEED TO STEP 2. IF NOT, PROCEED TO STEP 3.
 - ALL ISOLATOR PLUS ROWS
 - REMOVE COVER FROM STRUCTURE AT UPSTREAM END OF ISOLATOR ROW PLUS
 - USING A FLASHLIGHT, INSPECT DOWN THE ISOLATOR ROW PLUS THROUGH OUTLET PIPE
 - MIRRORS ON POLES OR CAMERAS MAY BE USED TO AVOID A CONFINED SPACE ENTRY
 - FOLLOW OSHA REGULATIONS FOR CONFINED SPACE ENTRY IF ENTERING MANHOLE
 - IF SEDIMENT IS AT OR ABOVE 3" (80 mm) PROCEED TO STEP 2. IF NOT, PROCEED TO STEP 3.
- STEP 2) CLEAN OUT ISOLATOR ROW PLUS USING THE JETVAC PROCESS
- A FIXED CULVERT CLEANING NOZZLE WITH REAR FACING SPREAD OF 45° (1.1 m) OR MORE IS PREFERRED
 - APPLY MULTIPLE PASSES OF JETVAC UNTIL BACKFLUSH WATER IS CLEAN
 - VACUUM STRUCTURE SUMP AS REQUIRED
- STEP 3) REPLACE ALL COVERS, GRATES, FILTERS, AND LIDS. RECORD OBSERVATIONS AND ACTIONS.
- STEP 4) INSPECT AND CLEAN BASINS AND MANHOLES UPSTREAM OF THE STORMTECH SYSTEM.

NOTES

- INSPECT EVERY 6 MONTHS DURING THE FIRST YEAR OF OPERATION. ADJUST THE INSPECTION INTERVAL BASED ON PREVIOUS OBSERVATIONS OF SEDIMENT ACCUMULATION AND HIGH WATER ELEVATIONS.
- CONDUCT JETTING AND VACTORING ANNUALLY OR WHEN INSPECTION SHOWS THAT MAINTENANCE IS NECESSARY.



4" PVC INSPECTION PORT DETAIL (SC SERIES CHAMBER)
NTS



ACR TYPE B

ACR TYPE M

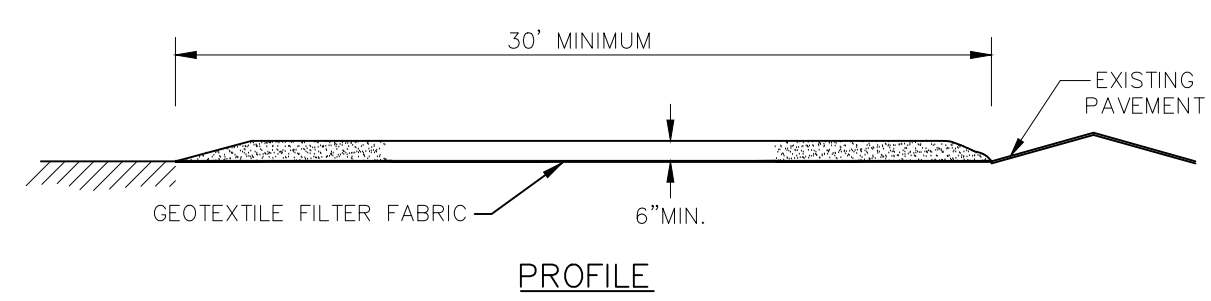
ACR TYPE K

Notes:

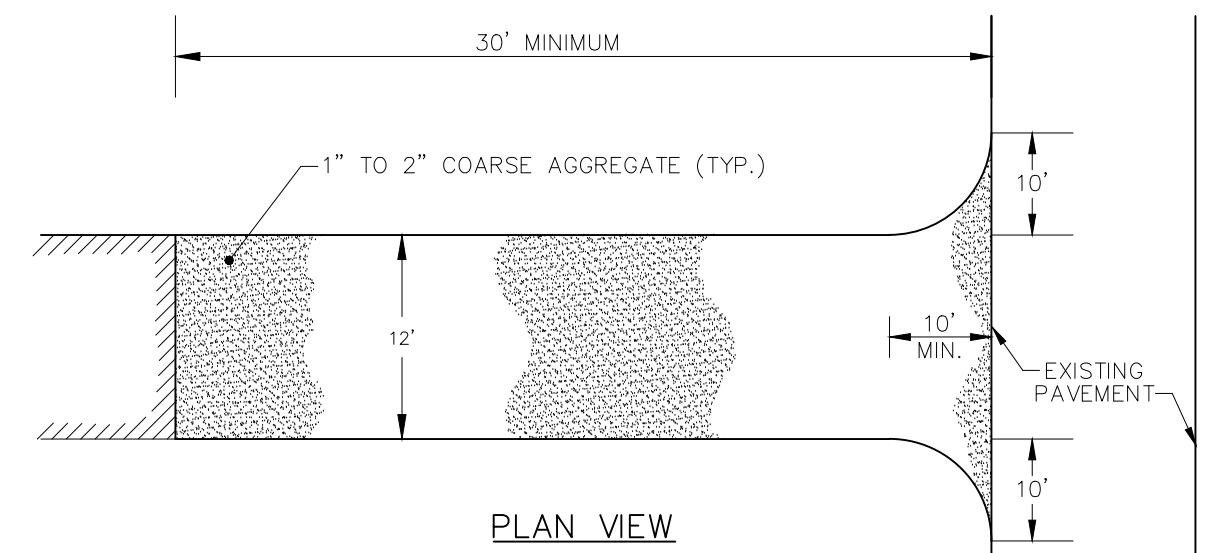
- THE MAXIMUM ALLOWABLE SIDEWALK AND CURB RAMP CROSS SLOPES SHALL BE 1.5 (1% MIN).
- THE MAXIMUM ALLOWABLE SLOPE OF ACCESSIBLE ROUTE EXCLUDING CURB RAMPS SHALL BE 5%.
- THE MAXIMUM ALLOWABLE SLOPE OF ACCESSIBLE ROUTE AT CURB RAMPS SHALL BE 7.5%.
- A MINIMUM OF 3 FEET CLEAR SHALL BE MAINTAINED AT ANY PERMANENT OBSTACLE IN ACCESSIBLE ROUTE (I.E., HYDRANTS, UTILITY POLES, TREE WELLS, SIGNS, ETC.).
- CURB TREATMENT VARIES, SEE PLANS FOR CURB TYPE
- RAMP, CURB AND ADJACENT PAVEMENTS SHALL BE GRADED TO PREVENT PONDING
- TYPICAL SIDEWALK SECTION FOR RAMP SECTION CONSTRUCTION.
- WHERE ACCESSIBLE ROUTES ARE LESS THAN 5' IN WIDTH (EXCLUDING CURBING) A 5' x 5' PASSING AREA SHALL BE PROVIDED AT INTERVALS NOT TO EXCEED 200 FEET.
- ELIMINATE CURBING (OTHER THAN VERTICAL CURBING, WHICH SHALL BE SET FLUSH) WHERE IT ABUTS ROADWAY.
- DETECTABLE WARNINGS SHALL CONTRAST VISUALLY WITH ADJOINING SURFACES.
- DETECTABLE WARNINGS SHALL BE INSTALLED PERPENDICULAR TO THE ACCESSIBLE ROUTE.

ACCESSIBLE CURB RAMPS (ACR)

NOT TO SCALE



PROFILE



PLAN VIEW

CONSTRUCTION SPECIFICATIONS:

- STONE FOR A STABILIZATION CONSTRUCTION ENTRANCE SHALL BE 1 TO 2 INCH STONE, RECLAIMED STONE.
- THE LENGTH OF THE STABILIZED ENTRANCE SHALL NOT BE LESS THAN 30 FEET.
- THE THICKNESS OF THE STONE FOR THE STABILIZED ENTRANCE SHALL NOT BE LESS THAN 6 INCHES.
- THE WIDTH OF THE ENTRANCE SHALL NOT BE LESS THAN A FULL WIDTH OF THE ENTRANCE WHERE INGRESS OR EGRESS OCCURS OR 10 FEET, WHICHEVER IS GREATER.
- GEOTEXTILE FILTER CLOTH SHALL BE PLACED OVER THE ENTIRE AREA PRIOR TO PLACING THE STONE.
- ALL SURFACE WATER THAT IS FLOWING TO OR DIVERTED TOWARDS THE CONSTRUCTION ENTRANCE SHALL BE PIPED BENEATH THE ENTRANCE. IF PIPING IS IMPRACTICAL, A BERM SUBSTITUTED FOR THE PIPE.

STABILIZED CONSTRUCTION ENTRANCE DETAIL

NOT TO SCALE

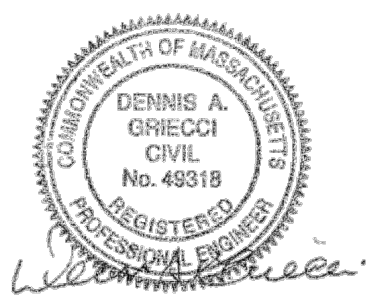
Revision No.	Revision Description	Date
2	REVISE PER PEER REVIEW AND ENGINEERING DEPT. COMMENTS	11/2/2023
1	NO REVISIONS THIS SHEET	9/22/2023

**SITE DETAILS
VP HAVERHILL STREET
METHUEN, MASS.**

PREPARED FOR: AMIGOS COFFEE, LLC
DATE: JULY 31, 2023
SCALE: 1"=20'



1 East River Place
Methuen, Mass. 01844
Telephone: 978-687-3828



Dennis A. Griecci
Reg. Prof. Engineer

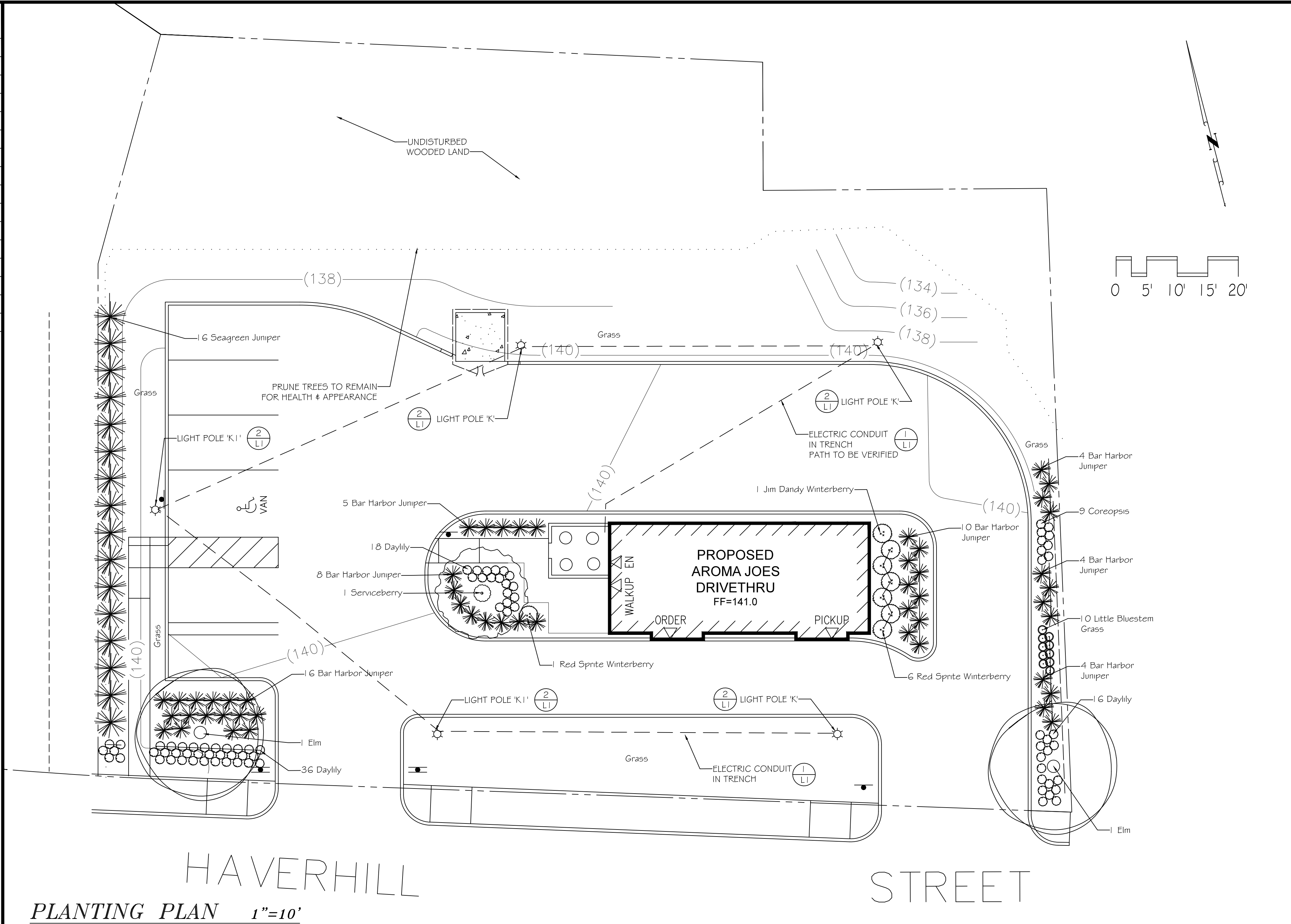


PLANT LIST

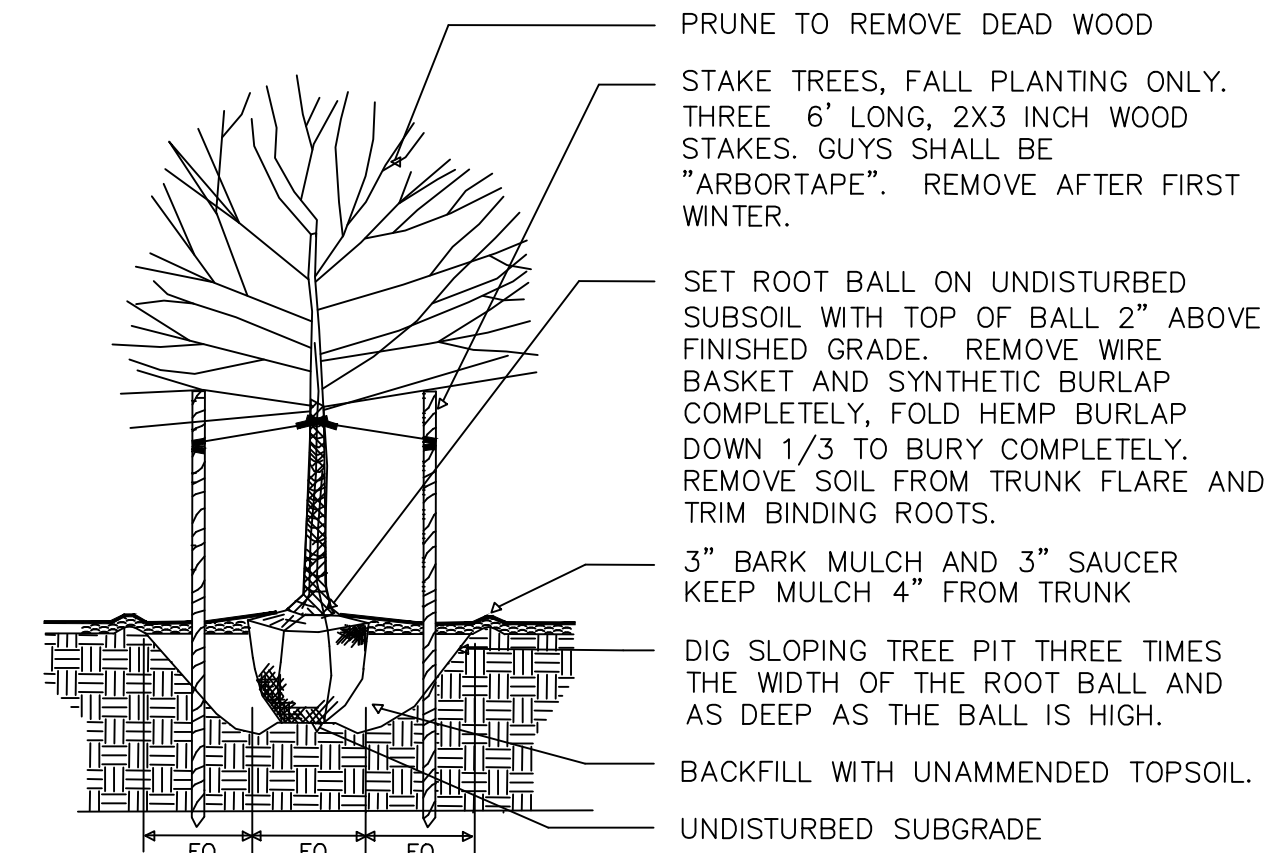
QTY.	SIZE	COMMON NAME	BOTANICAL NAME
TREES			
1	5-6'	Autumn Brilliance Serviceberry	Amelanchier 'Autumn Brilliance'
2	2.5-3"	Valley Forge Elm	Ulmus 'Valley Forge'
SHRUBS			
7	24-36"	Red Sprite Winterberry	Ilex verticillata 'Red Sprite'
1	4-5'	Jim Dandy Winterberry	Ilex vert. 'Jim Dandy'
16	24-36"	Seagreen Juniper	Juniperus chin. 'Seagreen'
51	18-24"	Bar Harbor Juniper	Juniperus horiz. 'Bar Harbor'
PERENNIALS			
9	2 gal.	Coreopsis	Coreopsis verticillata
70	2 gal.	Daylily	Hemerocallis 'Stella d'Oro'
10	2 gal.	Little Bluestem	Schizachyrium scoparium 'Blue Heaven'

PLANTING NOTES

- UTILITIES: CALL DIG SAFE PRIOR TO ANY DIGGING OR GRADING AT THE SITE. LANDSCAPE CONTRACTOR SHALL REVIEW ARCHITECTURAL/ENGINEERING PLANS TO BECOME THOROUGHLY FAMILIAR WITH SURFACE AND SUBSURFACE UTILITIES. LANDSCAPE CONTRACTOR IS TO COORDINATE HIS WORK WITH THE IRRIGATION AND LIGHTING CONTRACTORS.
- COMPACTED SUBGRADE SHALL BE TILLED PRIOR TO THE SPREADING OF LOAM. COMPACTED LOAM SHALL BE TILLED PRIOR TO THE SPREADING OF SEED, LAYING OF SOD, OR PLANTING OF TREES AND SHRUBS. COMPACTED GRASS AREAS SHALL BE AERATED.
- DRAINAGE: THE LANDSCAPE CONTRACTOR SHALL INSURE BEFORE AND AFTER THE SPREADING OF LOAM THAT ALL AREAS WILL DRAIN.
- LOAM SHALL BE CLEAN, WELL DRAINED TOPSOIL, FREE OF TOXINS, CONTAINING A MINIMUM OF 10% ORGANIC MATTER, THOROUGHLY RAKED TO REMOVE STONES AND DEBRIS GREATER THAN 1". WHETHER FROM THE SITE OR IMPORTED, LOAM SHALL BE TESTED FOR PLANTING SUITABILITY (pH, ORGANIC MATTER, AVAILABLE PLANT NUTRIENTS, C/N RATIO, BULK DENSITY, SOLUBLE SALTS, HEAVY METALS, ETC.). AT LEAST THREE TESTS SHALL BE TAKEN PER STOCKPILE FOR CONSISTENCY. IF SOIL IS FOUND TO BE DEFICIENT, CONTRACTOR SHALL PROVIDE A PROGRAM OF CORRECTIVE ACTIONS. COMPOST SHALL BE ADDED AND TILLED INTO THE SOIL AS NECESSARY TO BRING THE ORGANIC CONTENT TO 10% MIN. ALL PLANT BEDS SHALL HAVE A MINIMUM OF 12" OF LOAM. ALL LAWN AREAS SHALL HAVE A MINIMUM OF 6" OF LOAM.
- PLANT PITS SHALL BE THREE ROOT BALL DIAMETERS IN WIDTH, AND NO DEEPER THAN THE PLANT BALL. REMOVE SOIL FROM THE TOP OF THE ROOT BALL DOWN TO THE TRUNK FLARE BY LOOSENING THE BURLAP AND DIG PLANT PIT SUCH THAT ROOT FLARE IS 1 TO 2 INCHES ABOVE FINISHED GRADE.
- SET PLANT IN THE HOLE. CUT AWAY ALL VISIBLE ROPE AND BURLAP. REMOVE WIRE BASKETS. REMOVE SOIL TO EXPOSE ROOT FLARE.
- BACKFILL HOLE WITH EXISTING SOIL. WHEN BACKFILLING IS HALF COMPLETE, FILL PIT WITH WATER AND ALLOW TO DRAIN TO REMOVE AIR POCKETS. COMPLETE BACKFILLING LEAVING THE ROOT FLARE EXPOSED.
- MIX MYCOR TREE SAVER INTO TOP 8" OF SOIL ADJACENT TO THE ROOT BALL AT THE RATE OF 1 PACKET PER CALIPER INCH OF TRUNK OR 1 PACKET PER FOOT OF ROOT BALL DIAMETER.
- WATER-HOLDING SAUCER SHALL BE BUILT UP AROUND THE PLANT PIT. FLOOD WITH WATER FOR 5 MINUTES IMMEDIATELY AFTER PLANTING.
- STAKES AND TREE WRAP: THE LANDSCAPE CONTRACTOR SHALL BE WHOLLY RESPONSIBLE FOR STABILITY AND PLUMB CONDITION OF ALL TREES AND SHRUBS AND SHALL BE RESPONSIBLE FOR ANY DAMAGE CAUSED BY INSTABILITY OF ANY PLANT MATERIALS. STAKES AND TREE WRAP SHALL BE REMOVED IN THE SPRING PRIOR TO FINAL ACCEPTANCE AND RELEASE OF THE GUARANTEE.
- COMPOST: IF MATERIAL IS PLANTED IN UNDISTURBED SOIL, SPREAD 1 TO 2" OF COMPOST OVER THE ENTIRE PLANT BED OR LAWN AREA. DO NOT FERTILIZE.
- MULCH AREAS AROUND PROPOSED TREES AND SHRUBS AND ALL PLANT BEDS WITH 3" SHREDDED BARK MULCH. DO NOT MULCH AGAINST TRUNKS AND STEMS.
- PRUNING: REMOVE ALL DEAD, BROKEN AND DAMAGED BRANCHES.
- WATER PLANTS ONCE A DAY FOR THE FIRST WEEK AND ONCE A WEEK FOR THE FIRST PLANTING SEASON. WATER AT THE RATE OF FIVE GALLONS PER SHRUB AND 10 GALLONS PER TREE.
- GUARANTEE ALL PLANTS FOR ONE FULL YEAR FROM DATE OF ACCEPTANCE.



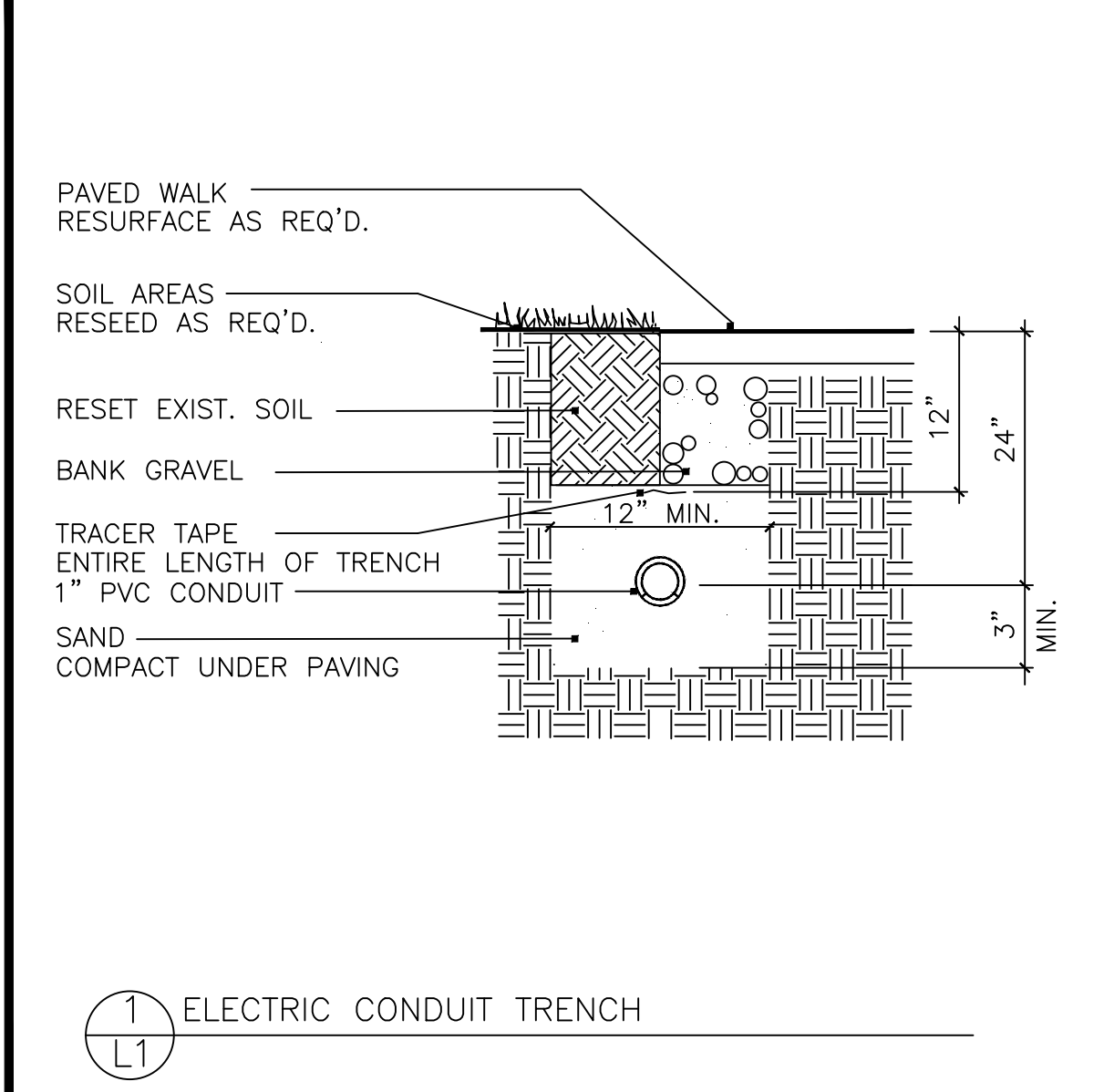
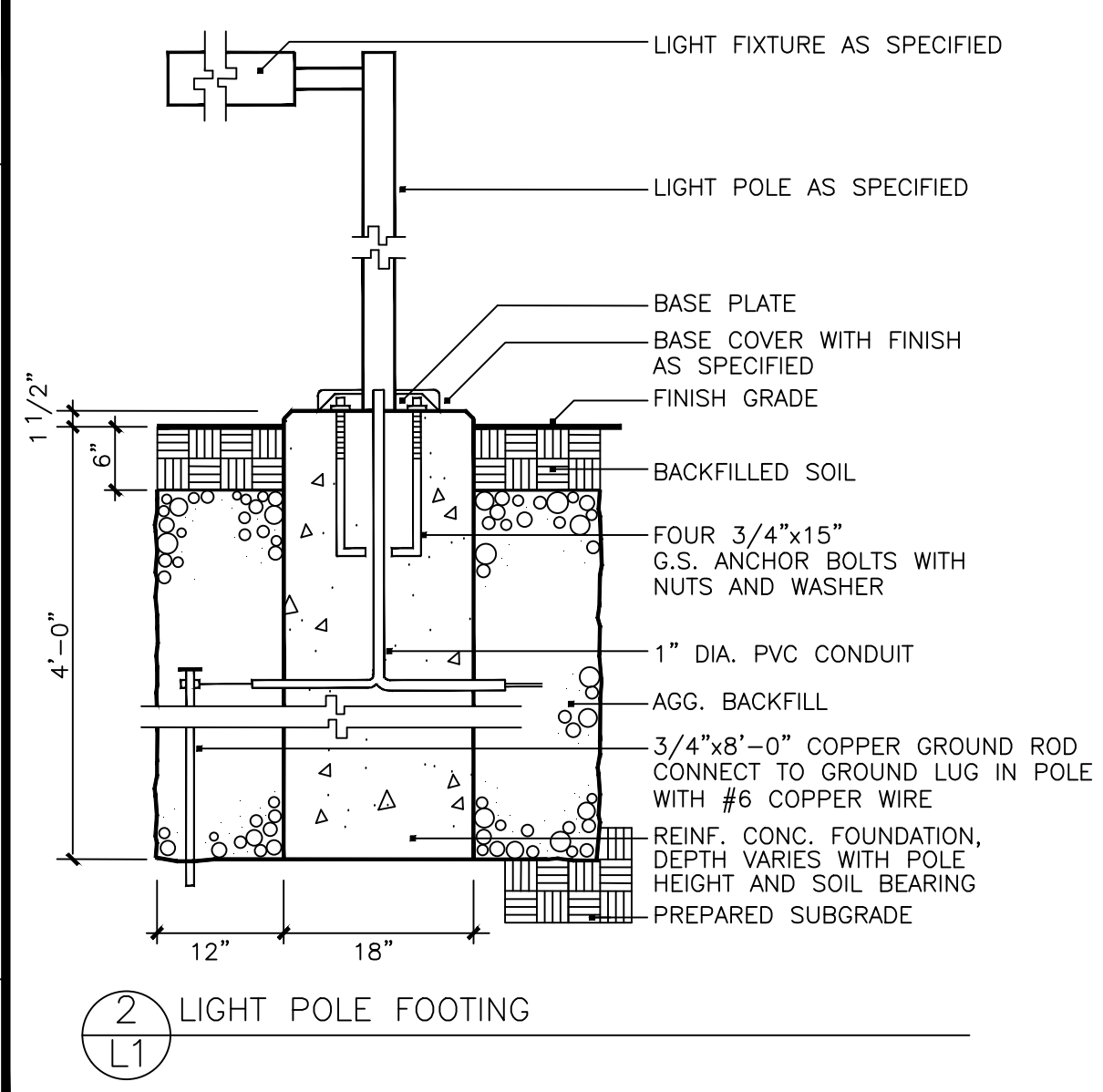
H A V E R H I L L
 PLANTING PLAN 1"=10'
 S T R E E T



LIGHT FIXTURE

KEY	MANUFACTURER	CATALOG NO.	WATT	LIGHT
K1	Eaton McGraw-Edison	TLM-E02-LED-E1-SL3-70-30	52W	3000K CCTM 70 CRI LEDS 128 Lumens
K	Eaton McGraw-Edison	TLM-E02-LED-E1-SL4-70-30	52W	3000K CCTM 70 CRI LEDS 128 Lumens

MOUNTING	REMARKS
20' Height	Talon Medium LED Site Luminaire Lightboards with Acculed Optics - Type 3 and Type 4 Distribution with Spill Light Control



Amigos Coffee, LLC
 46 Daniels Drive
 Lee, NH 03861

WEINMAYR/AY ASSOCIATES, INC.
 LANDSCAPE ARCHITECTS
 360 Charles River Rd., Watertown, MA 02472
 617.957.9733
 dpa@weinmayray.com

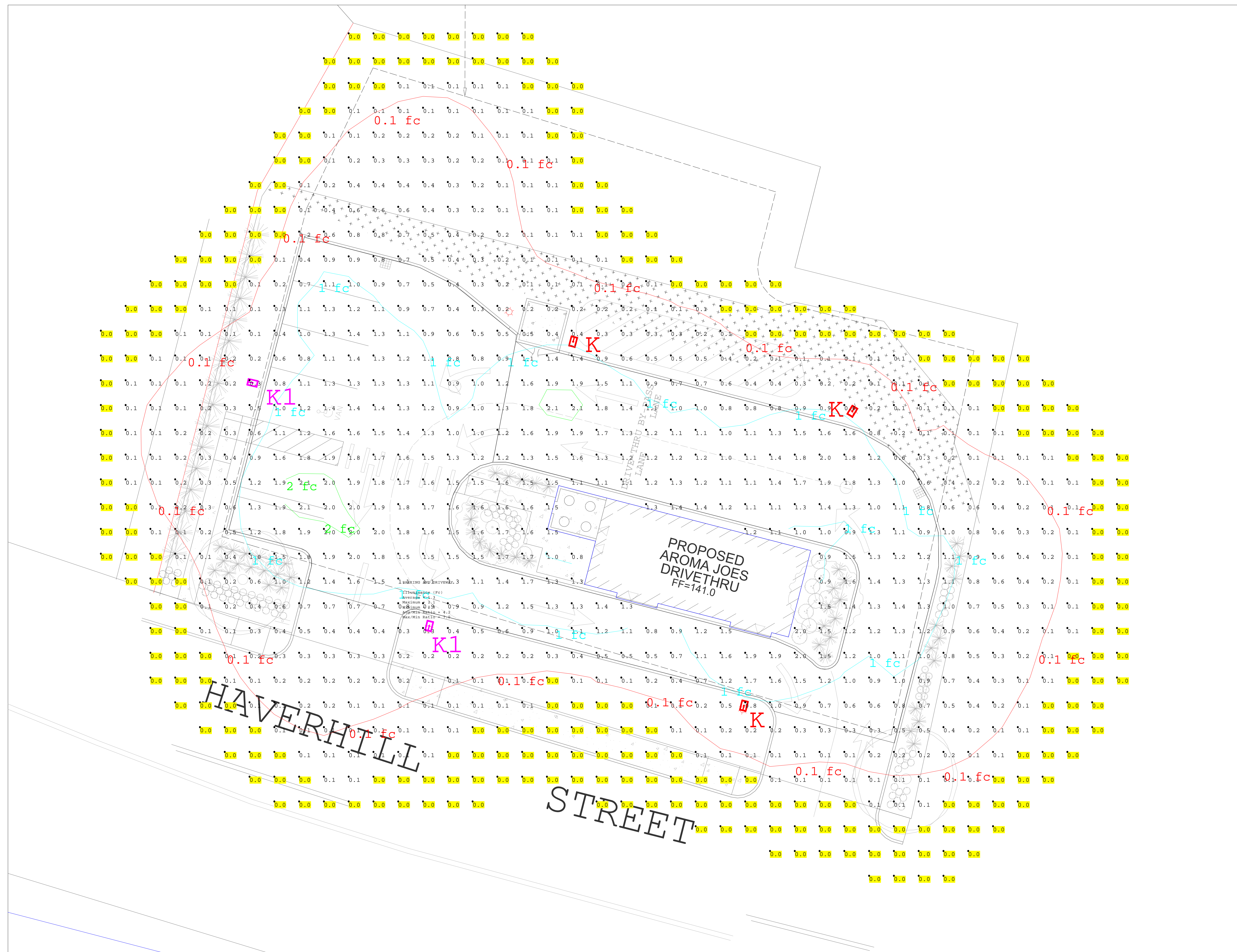
David A. Jay, MA Reg. No. 1019
 David A. Jay, MA Reg. No. 1019

LANDSCAPE PLAN
 75 HAVERILL ST. METHUEN

NO.	REV.	DATE	BY	DESCRIPTION
1				
2				
3				

DATE: Aug. 31, 2023
 DRAWN: D.A.J.
 CHECKED: D.A.J.
 SCALE: 1"=10'

L-1
 DRAWING NO.



Luminaire Schedule		Label	Arrangement	Description	Lum. Watts	Lum. Lumens	LLF
Qty	Symbol						
3		K	Single	MCGRAW: TLM-E02-LED-E1-SL4-HSS-7030 (20' HEIGHT)	52.1	3717	0.900
2		K1	Single	MCGRAW: TLM-E02-LED-E1-SL3-HSS-7030 (20' HEIGHT)	52.1	3167	0.900

Calculation Summary						
Label	Units	Avg	Max	Min	Avg/Min	Max/Min
SITE (ALL POINTS) Planar	Fc	0.5	2.1	0.0	N.A.	N.A.
PARKING AND DRIVEWAY	Fc	1.3	2.1	0.3	4.2	7.0

Drawn By: A.M.
Date: 8/22/2023
www.reflexlighting.com

DISCLAIMER: CALCULATIONS SHOULD BE USED AS A GUIDE ONLY.
LIGHT LEVELS ARE SUBJECT TO CONDITIONS IN THE FIELD.

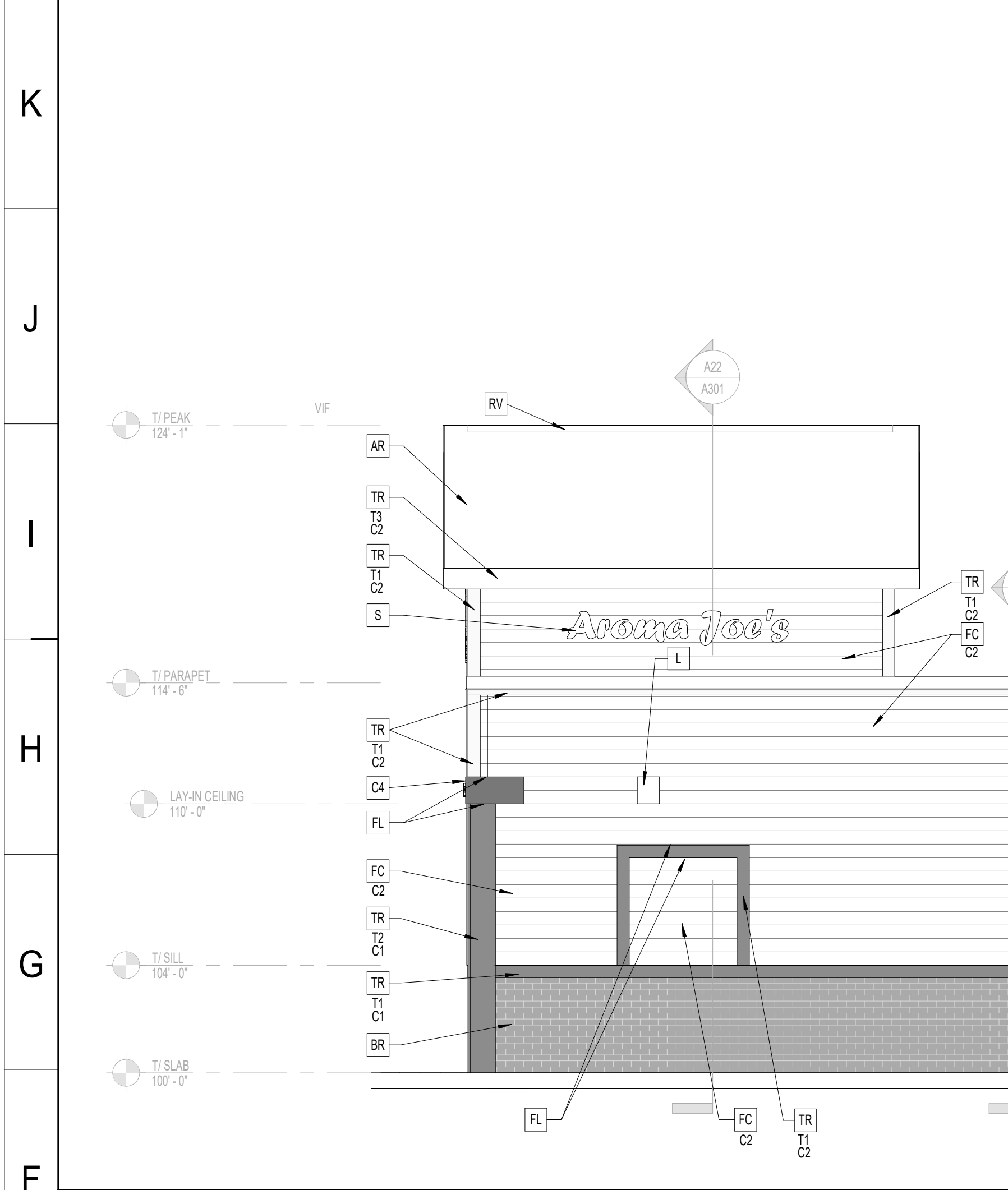
Specifier:
Salesperson:
Scale: Not to Scale

AROMA JOES- METHUEN MA
PROPOSED SITE LIGHTING

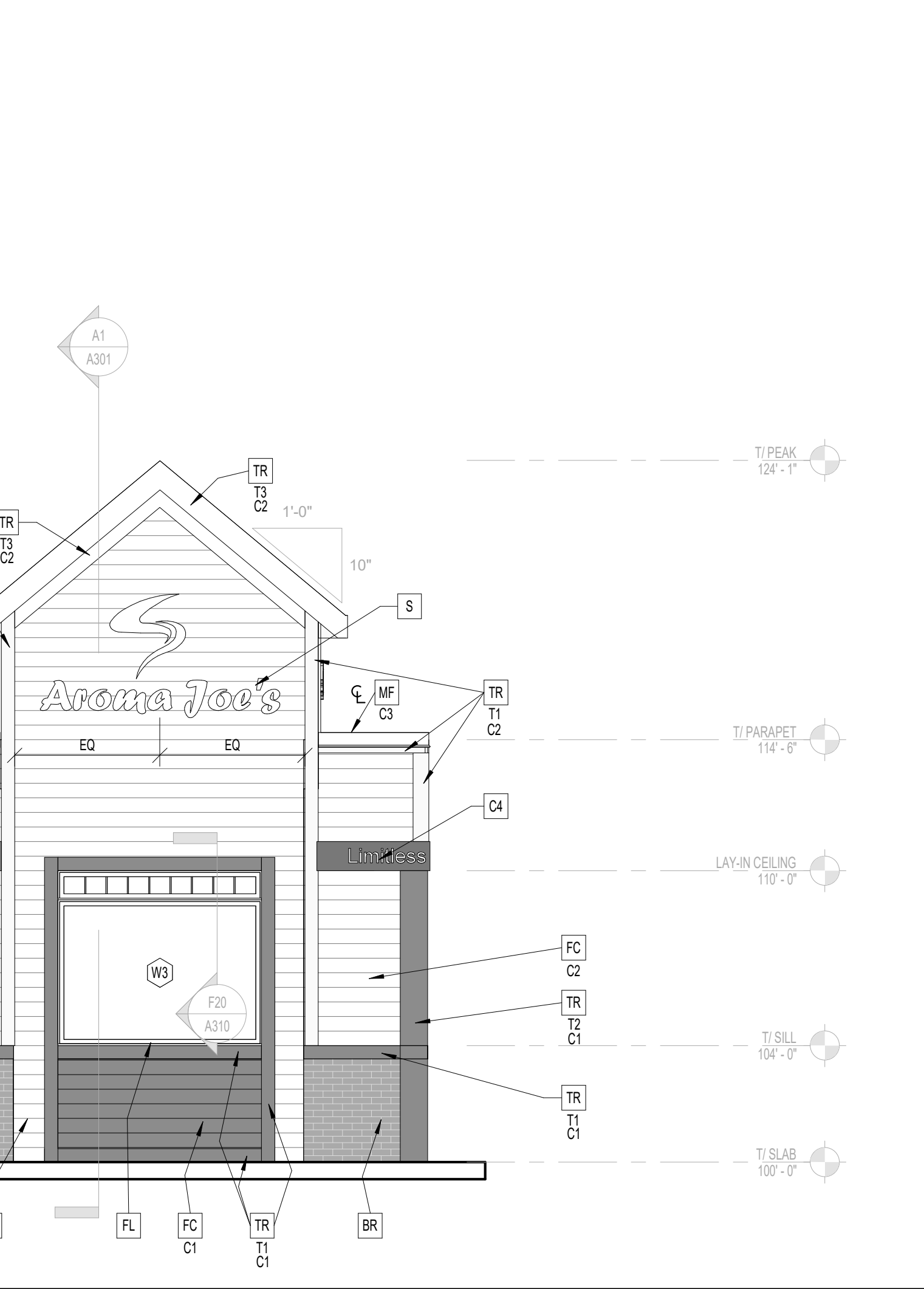


specifications@reflexlighting.com

1 2 3 4 5 6 7 8 9 10 11 12 13 14 15 16 17 18 19 20 21 22 23 24 25 26 27 28 29 30 31

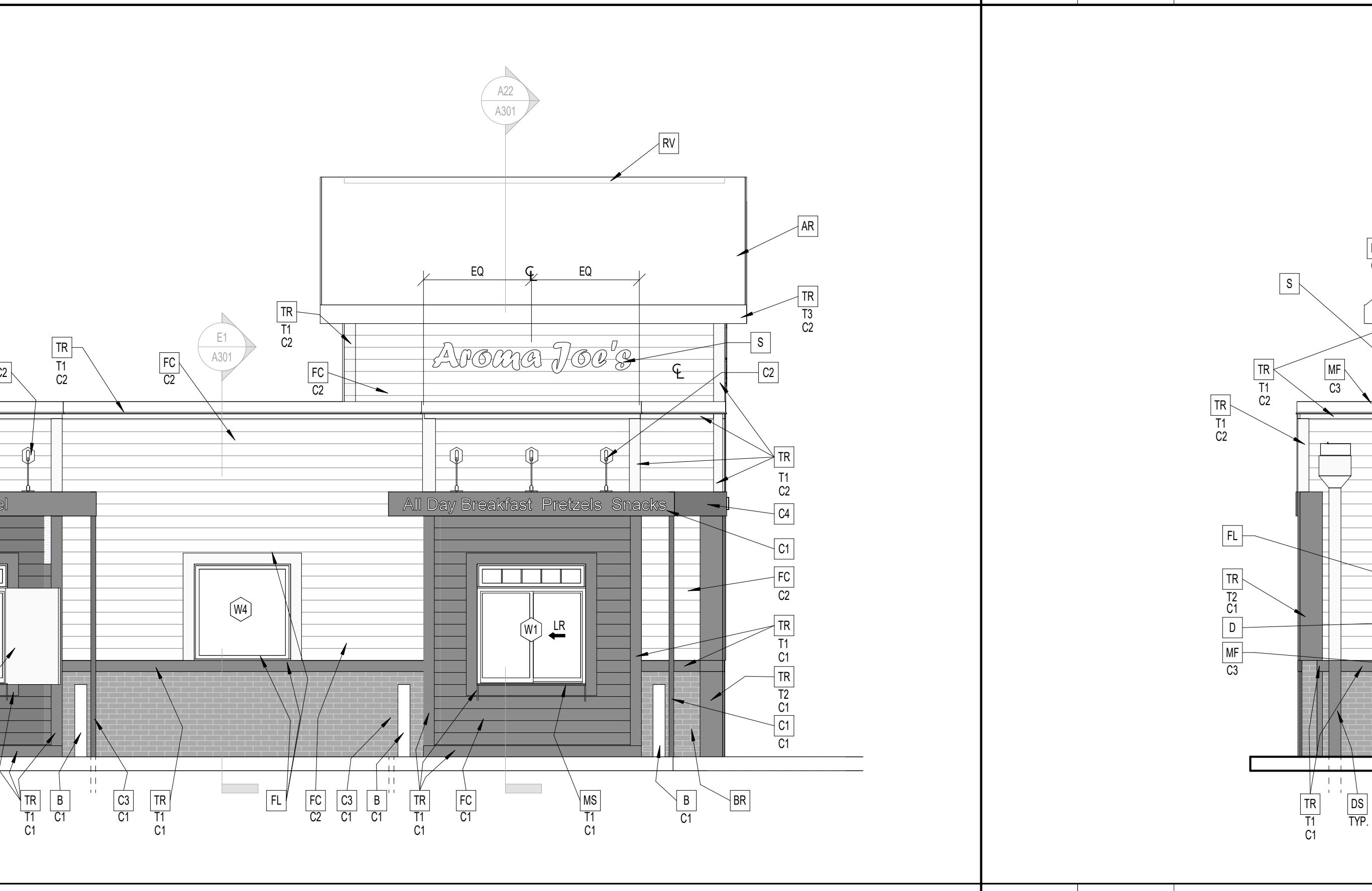
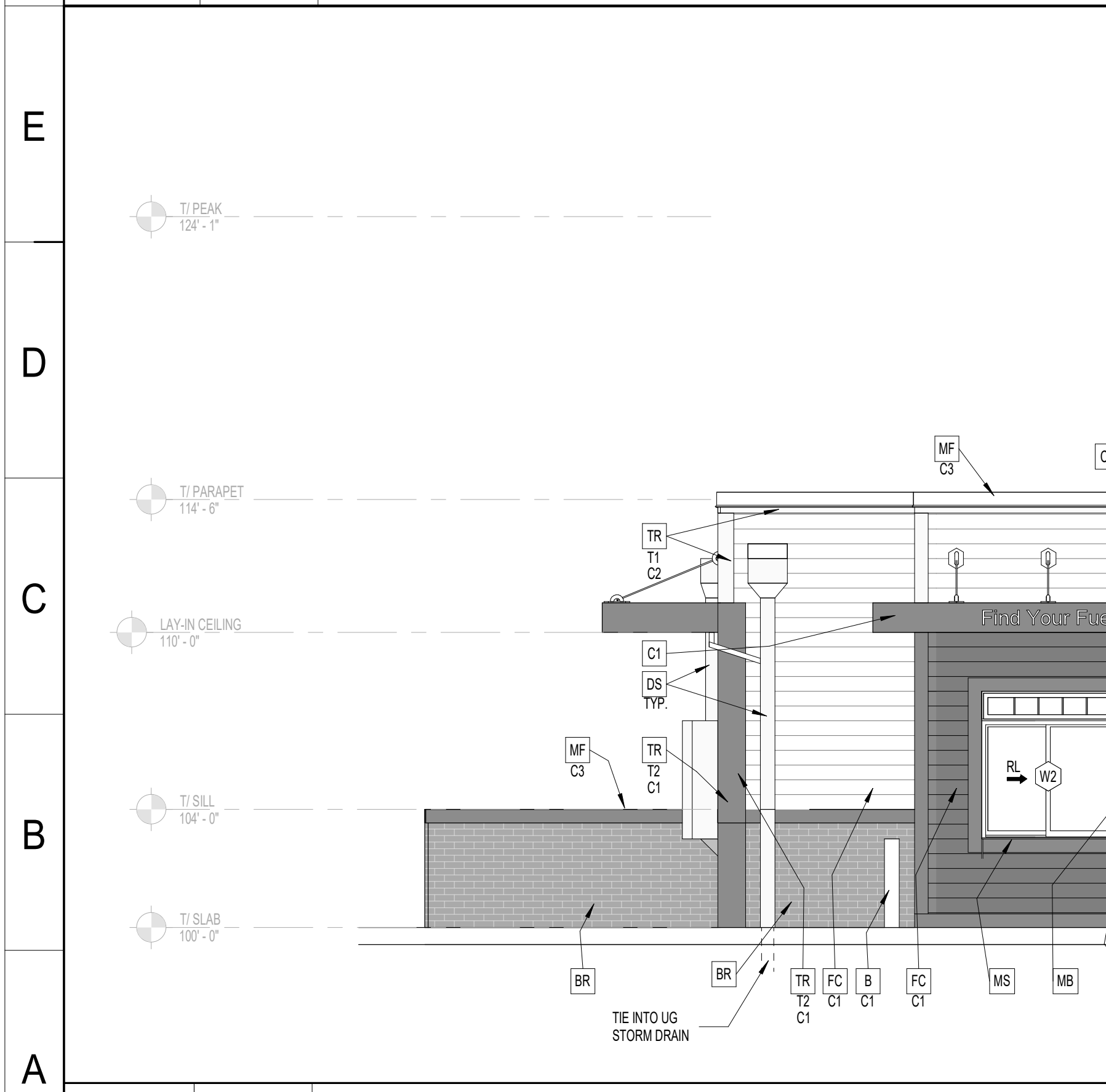


KEYNOTE LEGEND			
AR	ASPHALT/FIBERGLASS ARCHITECTURAL SHINGLES W/O CAMBRIDGE AR - CHARCOAL GRAY	FC	HARDIE LAP SIDING SERIES: CITYSCAPE COLOR: C1 = 7 1/4" (6" EXPOSURE) MATCH 'P1' C2 = 7 1/4" (6" EXPOSURE) ARCTIC WHITE
B	BOLLARD - PAINTED HIGH REFLECTIVE WHITE	FL	FLASHING, TYP.
BR	THIN BRICK BY ACME BRICK SERIES: CITYSCAPE COLOR: RUSHMORE SIZE: THIN BRICK	L	WALL SCONCE LIGHT FIXTURE - SEE ELECTRICAL
C1	ALUMINUM CANOPY SYSTEM (COLOR: MATCH 'P1')	MB	MENU BOARD
C2	CANOPY TIE-BACK (COLOR: MATCH 'P1')	MF	METAL FASCIA - REFER TP SECTIONS FOR ADDITIONAL INFO COLOR: C1 = MATCH 'P1' C2 = 'AJ WHITE' C3 = 'AJ GREY'
C3	CANOPY DOWN SPOUT & BRACKETS (COLOR: MATCH 'P1'). TIED TO U.G. STORM SEWER, TYP.	MS	8" STAINLESS STEEL SHELF - PROVIDE BLOCKING
C4	ALUMINUM SIGNBAND MATCH P-1	P	PAINT COLOR: P1 = 'AJ BLUE' - PLEASE REFER TO LATEST VERSION OF THE DCM P2 = 'AJ WHITE' - COLOR TO MATCH 'C2' FIBER CEMENT HARDIE SIDING ARCTIC WHITE
CB	CONCRETE BASE (COLOR: MATCH 'P1')	RL	EXTERIOR WINDOW ASSEMBLY - SEE WINDOW FRAME LEGEND ON A601
D	DOOR - PAINTED 'P1'	RL	DRIVE-THRU WINDOW → SLIDE DIRECTION RL = RIGHT TO LEFT LF = LEFT TO RIGHT
DS	SHEET METAL SCUPPER, CONDUCTOR HEAD & DOWNSPOUT - PAINTED 'P2' TIED TO U.G. STORM SEWER, TYP.		



E1 SCALE 1/4" = 1'-0" **RIGHT ELEVATION**

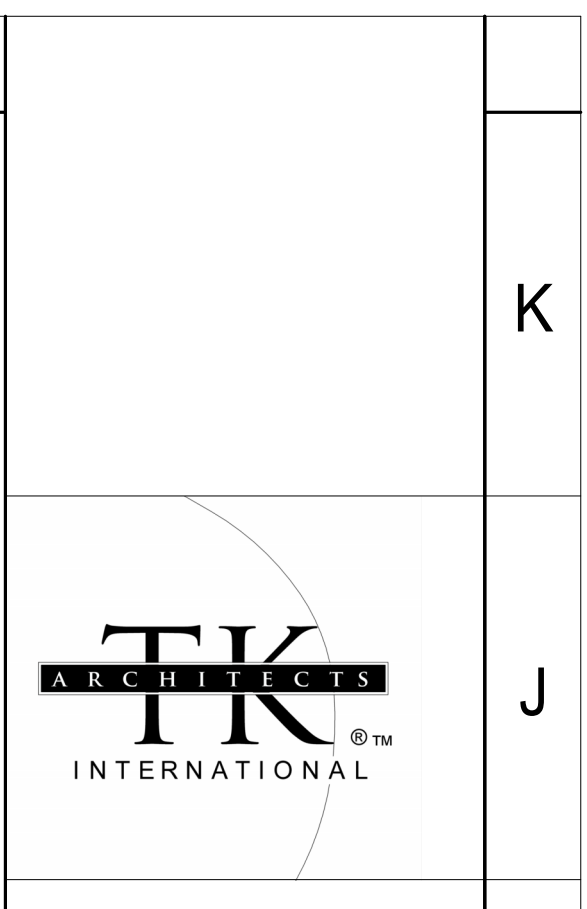
E20 SCALE 1/4" = 1'-0" **FRONT ELEVATION**



A1 SCALE 1/4" = 1'-0" **LEFT ELEVATION**

A20 SCALE 1/4" = 1'-0" **REAR ELEVATION**

1 2 3 4 5 6 7 8 9 10 11 12 13 14 15 16 17 18 19 20 21 22 23 24 25 26 27 28 29 30 31



1100 Main Street
Suite 2200
Kansas City, Missouri
64105
Phone : 816-842-7552
Fax : 816-842-1302

DRAWINGS & SPECIFICATIONS REMAIN THE PROPERTY OF THE DESIGN PROFESSIONAL. COPIES OF THE DRAWINGS & SPECIFICATIONS RETAINED BY THE CLIENT MAY BE UTILIZED ONLY FOR THEIR USE & FOR OCCUPYING THE PROJECT FOR WHICH THEY WERE PREPARED & NOT FOR CONSTRUCTION OF ANY OTHER PROJECT.

Aroma Joe's
AROMA JOE'S
79 HAVERHILL ST.
METHUEN, MA 01844

SITE PLAN REVIEW
2023.08.01

Revision Schedule		
#	Date	Description

PROJECT #
23625

ELEVATIONS - EXTERIOR

SHEET NUMBER
A201

K
J
I
H
G
F
E
D
C
B
A

K
J
I
H
G
F
E
D
C
B
A